

RNAV (GPS) PRM Y RWY 4L (CLOSE PARALLEL)

DETROIT METROPOLITAN WAYNE COUNTY (DTW)

WAAS CH 82439 W04A	APP CRS 038°	Rwy ldg 10000 TDZE 645 Apt Elev 645
--	------------------------	--

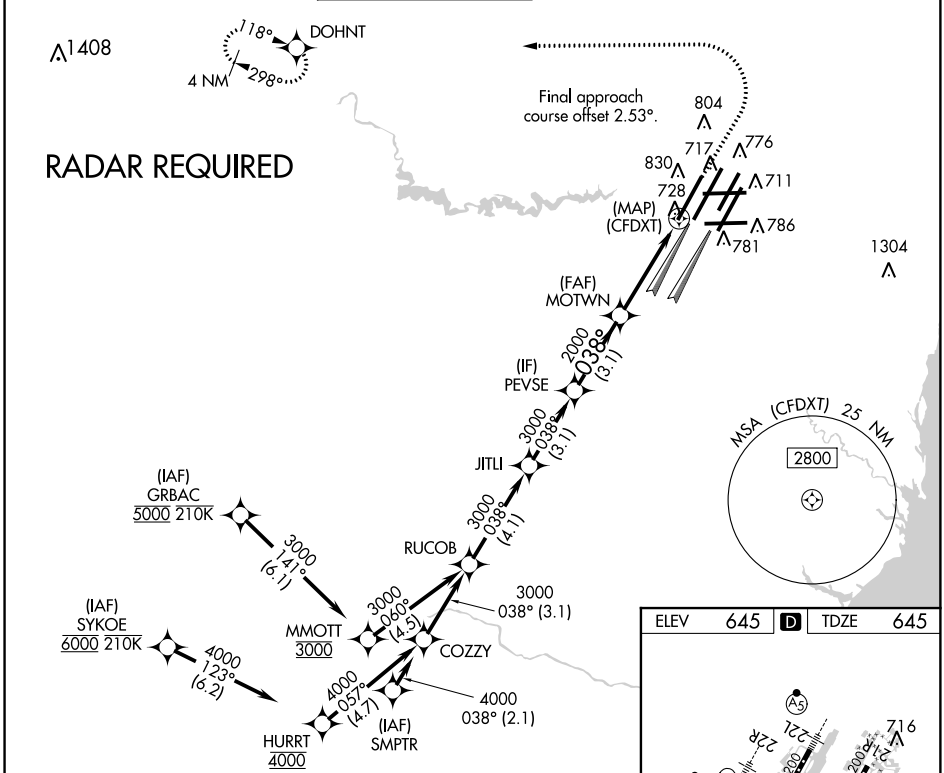
⚠ For uncompensated Baro-VNAV systems, LNAV/VNAV NA below -19°C (-2°F) or above 54°C (130°F). DME/DME RNP-0.3 NA. Use of FD or AP providing RNAV track guidance required during simultaneous operations. Simultaneous approach authorized. Dual VHF comm required. See additional requirements on AAUP.

ALSF-2

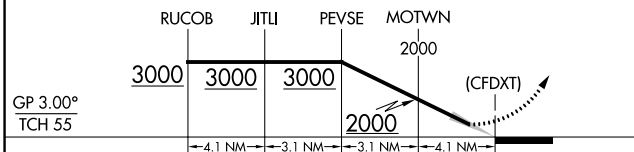
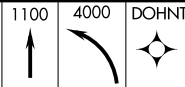


MISSED APPROACH:
Climb to 1100 then
climbing left turn to 4000
direct DOHNT and hold.

D-ATIS 133.675	DETROIT APP CON 124.05 284.0	METRO TOWER 135.0 317.725 PRM 127.05	GND CON 121.8 (NW) 132.725 (SW)	119.45 (NE) 119.25 (SE)	CLNC DEL 120.65	CPDLC
--------------------------	--	--	---	--	---------------------------	-------

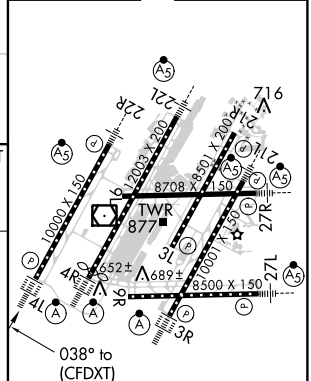


VGSI and RNAV glidepath not coincident (VGSI Angle 3.00/TCH 71).



CATEGORY	A	B	C	D
LPV DA		895/24	250 (300-½)	
LNAV/VNAV DA		1068/45	423 (500-¾)	

ELEV 645	D	TDZE 645
----------	----------	----------



TDZ/CL RWys 3R, 4L, 4R and 22R
REIL RWys 3L, 9L, 9R, and 21R
HIRL all runways

EC-1, 25 APR 2019 to 23 MAY 2019

EC-1, 25 APR 2019 to 23 MAY 2019