

DETROIT, MICHIGAN

AL-119 (FAA) **RNAV (GPS) PRM Z RWY 22L**

(CLOSE PARALLEL)

DETROIT METROPOLITAN WAYNE COUNTY (DTW)

| | | |
|--|------------------------|-------------------------|
| WAAS CH 99601 W22A | APP CRS 216° | Rwy Idg 12003 |
| | | TDZE 637 |
| | | Apt Elev 645 |

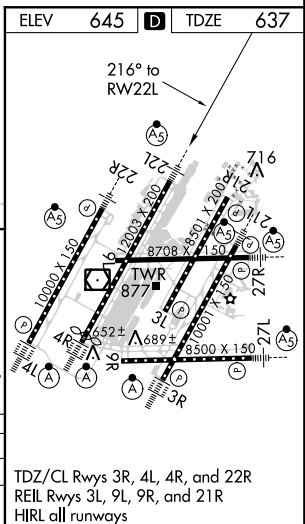
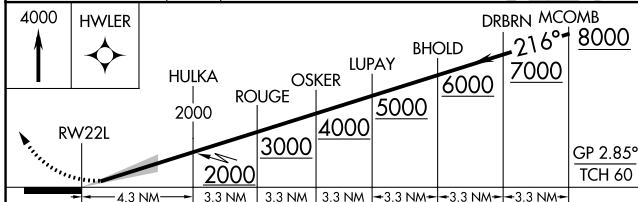
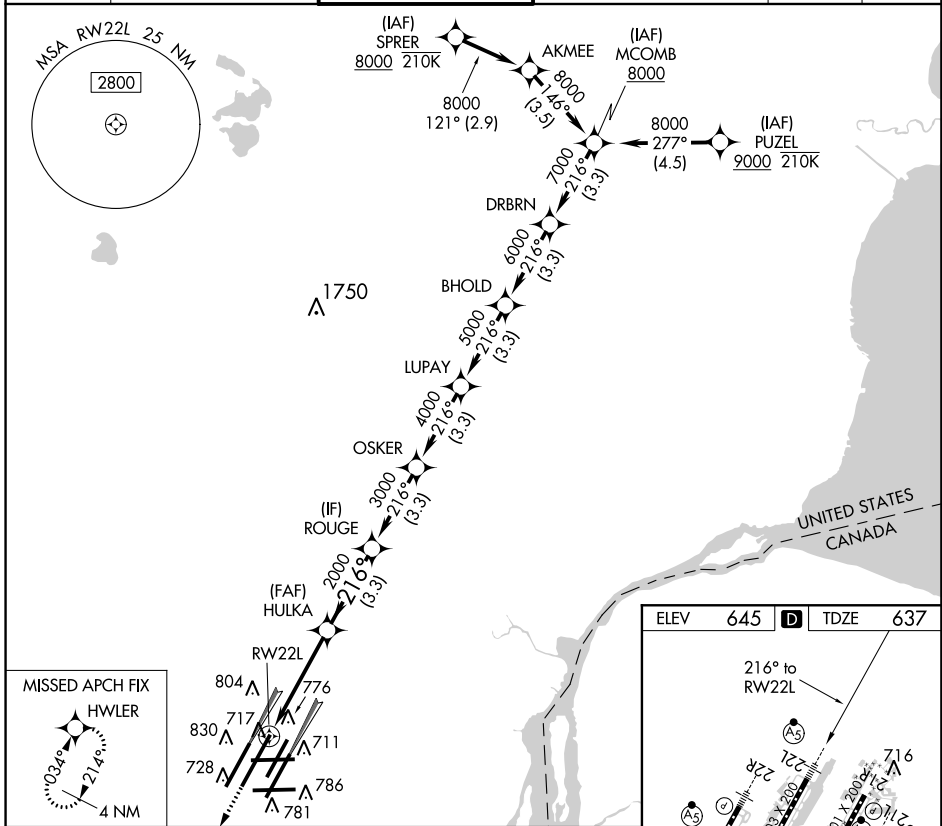
RNP APCH.

▼ For uncompensated Baro-VNAV systems, LNAV/VNAV NA below -10°C or above 54°C. Simultaneous approach authorized. Use of FD or AP required during simultaneous operations. Dual VHF comm required. See additional requirements on AAUP. For inop ALS, increase LNAV/VNAV all Cats visibility to RVR 4500. * RVR 1800 authorized with use of FD or AP or HUD to DA.



MISSED APPROACH:
Climb to 4000 direct
HWLER and hold.

| | | | | | |
|--------------------------|--|---|---|---------------------------|-------|
| D-ATIS 133.675 | DETROIT APP CON 124.05 284.0 | METRO TOWER 128.125 317.725 PRM 135.775 | GND CON 121.8 (NW) 119.45 (NE) 132.725 (SW) 119.25 (SE) | CLNC DEL 120.65 | CPDLC |
|--------------------------|--|---|---|---------------------------|-------|



| | | | | |
|--------------|---|--------|---------------|---|
| CATEGORY | A | B | C | D |
| LPV DA * | | 837/24 | 200 (200-1/2) | |
| LNAV/VNAV DA | | 938/24 | 301 (300-1/2) | |

DETROIT, MICHIGAN
Amdt 1A 28FEB19

42°13'N-83°21'W **DETROIT METROPOLITAN WAYNE COUNTY (DTW)**
RNAV (GPS) PRM Z RWY 22L (CLOSE PARALLEL)

EC-1, 25 APR 2019 to 23 MAY 2019

EC-1, 25 APR 2019 to 23 MAY 2019