

DETROIT, MICHIGAN

AL-119 (FAA)

RNAV (GPS) PRM Z RWY 4R (CLOSE PARALLEL)

DETROIT METROPOLITAN WAYNE COUNTY (DTW)

WAAS CH 87139 W04B	APP CRS 036°	Rwy Idg 11494 TDZE 640 Apt Elev 645
----------------------------------------	------------------------	----------------------------------------------------------------

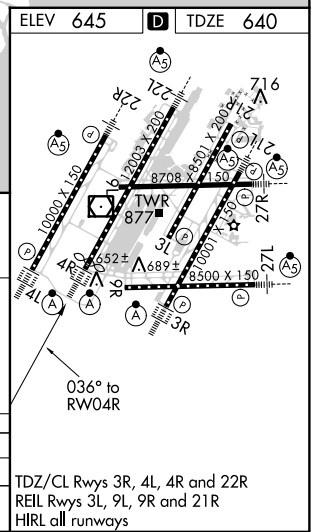
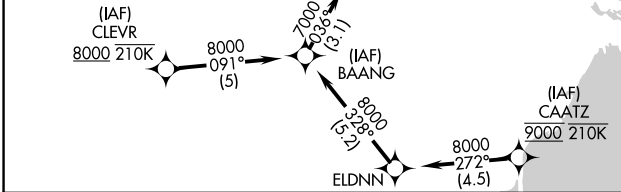
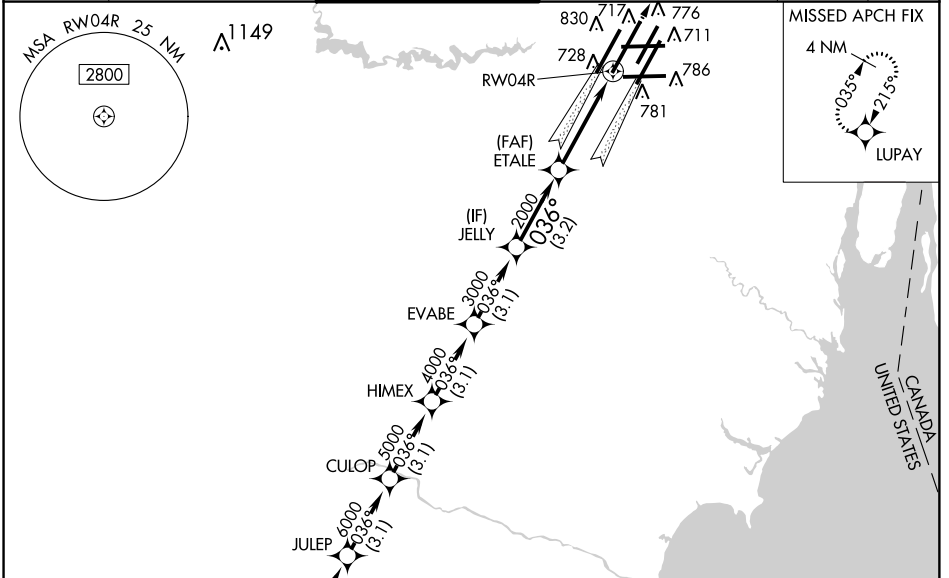
RNP APCH.

▽ For uncompensated Baro-VNAV systems, LNAV/VNAV NA below -19°C or above 54°C. Simultaneous approach authorized. Use of FD or AP required during simultaneous operations. Dual VHF comm required. See additional requirements on AAUP.



MISSED APPROACH:
Climb to 4000 direct LUPAY and hold.

D-ATIS 133.675	DETROIT APP CON 124.05 284.0	METRO TOWER 128.125 317.725 PRM 135.775	GND CON 121.8 (NW) 119.45 (NE) 132.725 (SW) 119.25 (SE)	CLNC DEL 120.65	CPDLC
--------------------------	----------------------------------------	-------------------------------------------------------------	-----------------------------------------------------------------------------	---------------------------	-------



BAANG	JULEP	CULOP	HIMEX	EVABE	JELLY	ETALE	RWY 4R
8000	7000	6000	5000	4000	3000	2000	
GP 3.00° TCH 52							
	3.1 NM	3.1 NM	3.1 NM	3.1 NM	3.2 NM	4.1 NM	
	A	B	C	D			

CATEGORY						
LPV DA		840/18	200 (200-½)			
LNAV/VNAV DA		1021/35	381 (400-¾)			

TDZ/CL Rwy 3R, 4L, 4R and 22R
REIL Rwy 3L, 9L, 9R and 21R
HIRL all runways

DETROIT, MICHIGAN
Amdt 1A 28FEB19

42°13'N-83°21'W
RNAV (GPS) PRM Z RWY 4R (CLOSE PARALLEL)

DETROIT METROPOLITAN WAYNE COUNTY (DTW)

EC-1, 25 APR 2019 to 23 MAY 2019

EC-1, 25 APR 2019 to 23 MAY 2019