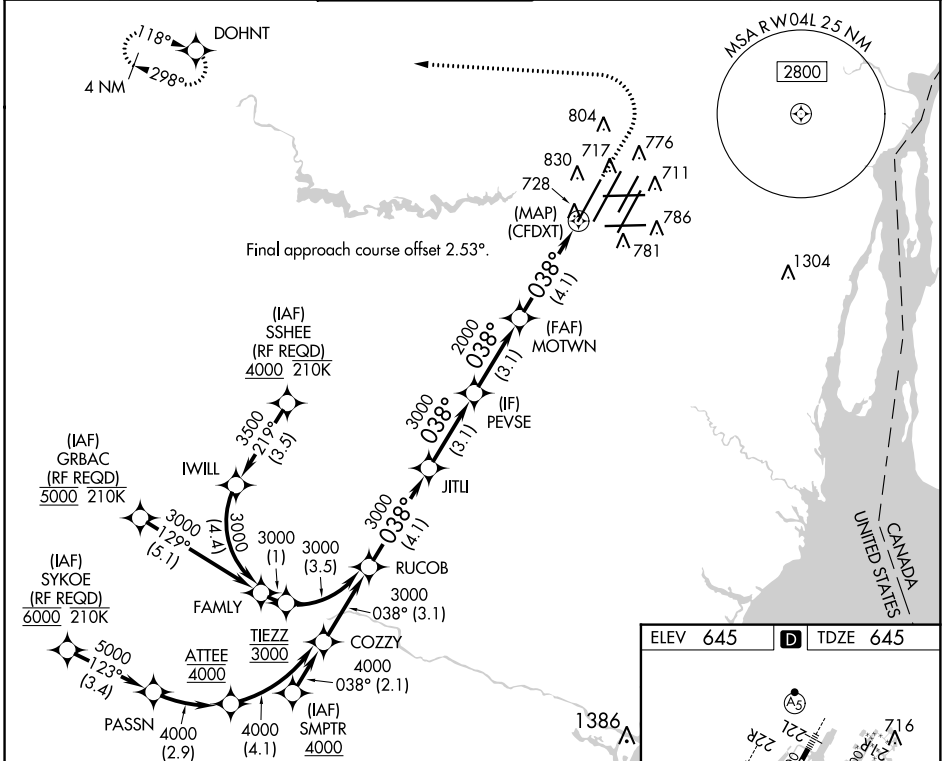


APP CRS	Rwy Idg	<b>10000</b>
<b>038°</b>	TDZE	<b>645</b>
	Apt Elev	<b>645</b>

# RNAV (RNP) U RWY 4L

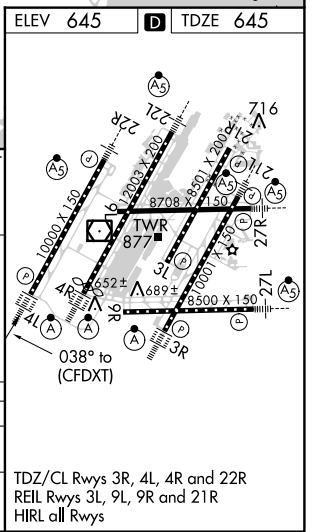
DETROIT METROPOLITAN WAYNE COUNTY (DTW)

RNP AR APCH.		METRO TOWER <b>135.0 317.725</b>		GND CON <b>121.8 (NW) 119.45 (NE)</b> <b>132.725 (SW) 119.25 (SE)</b>		CLNC DEL <b>120.65</b>		CPDLC
<p>▼ For uncompensated Baro-VNAV systems, procedure NA below -19°C (-2°F) or above 54°C (130°F). Simultaneous approach authorized. For inop ALS, increase RNP 0.30 DA all Cats visibility to RVR 6000.</p>				<p>ALSF-2</p>		<p>MISSED APPROACH: Climb to 1100 then climbing left turn to 4000 direct DOHNT and hold.</p>		



VGSI and RNAV glidepath not coincident (VGSI Angle 3.00/TCH 71).

RUCOB	JITLI	PEVSE	MOTWN	DOHNT
3000	3000	3000	2000	1100
GP 3.00° TCH 55		(CFDXT)		
4.1 NM	3.1 NM	3.1 NM	4.1 NM	
CATEGORY	A	B	C	D
RNP 0.30 DA	1058/40		413 (500-3/4)	



**AUTHORIZATION REQUIRED**

EC-1, 25 APR 2019 to 23 MAY 2019

EC-1, 25 APR 2019 to 23 MAY 2019