

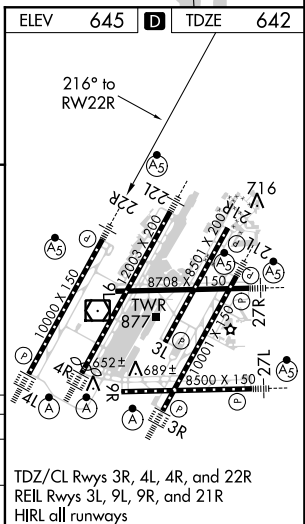
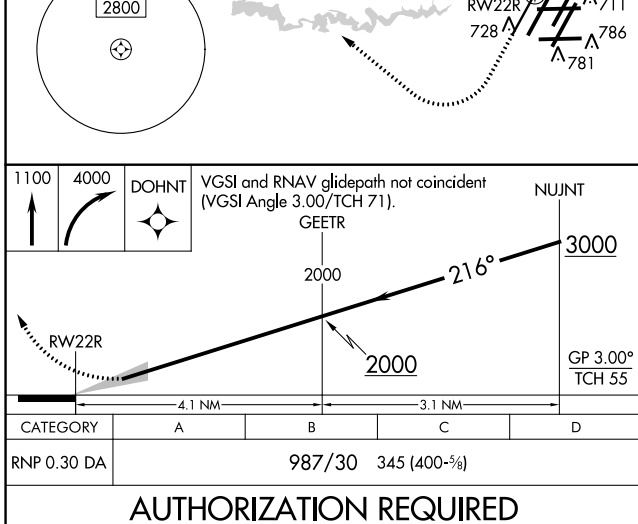
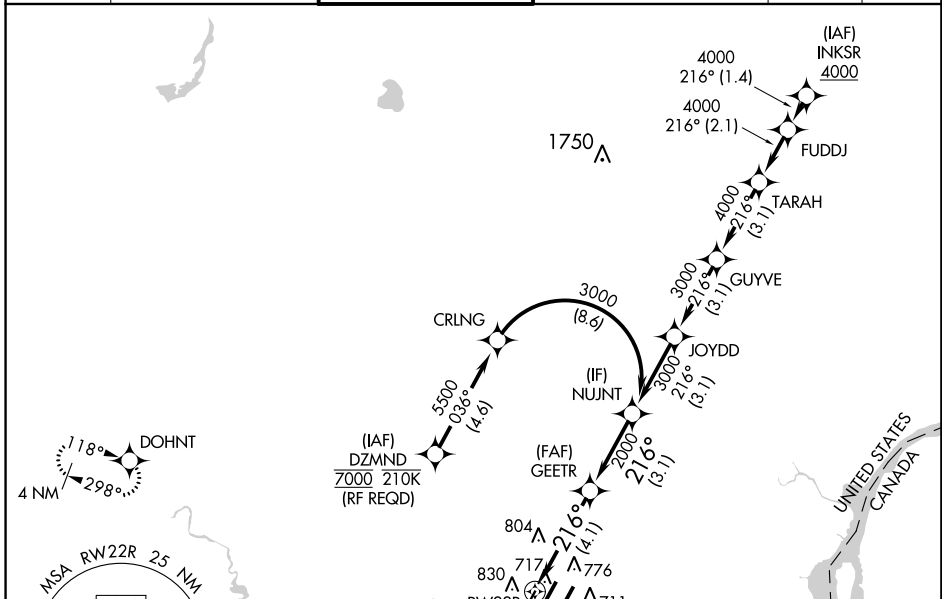
APP CRS 216°	Rwy Idg 10000
	TDZE 642
	Apt Elev 645

RNAV (RNP) W RWY 22R

DETROIT METROPOLITAN WAYNE COUNTY (DTW)

RNP AR APCH.		MALSR 	MISSED APPROACH: Climb to 1100 then climbing right turn to 4000 direct DOHNT and hold.
▽ For uncompensated Baro-VNAV systems, procedure NA below -1°C (-2°F) or above 54°C (130°F). Simultaneous approach authorized. For inop ALS, increase RNP 0.30 all Cats visibility to RVR 5500.			

D-ATIS 133.675	DETROIT APP CON 124.05 284.0	METRO TOWER 135.0 317.725	GND CON 121.8 (NW) 119.45 (NE) 132.725 (SW) 119.25 (SE)	CLNC DEL 120.65	CPDLC
--------------------------	--	-------------------------------------	---	---------------------------	-------



AUTHORIZATION REQUIRED

TDZ/Cl Rlys 3R, 4L, 4R, and 22R
REIL Rlys 3L, 9L, 9R, and 21R
HIRL all runways

EC-1, 25 APR 2019 to 23 MAY 2019

EC-1, 25 APR 2019 to 23 MAY 2019