

| | |
|------------------------|----------------------|
| APP CRS 036° | Rwy ldg 10000 |
| | TDZE 645 |
| | Apt Elev 645 |

RNAV (RNP) W RWY 4L

DETROIT METROPOLITAN WAYNE COUNTY (DTW)

RNP AR APCH.

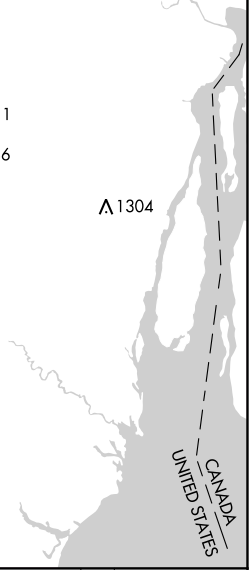
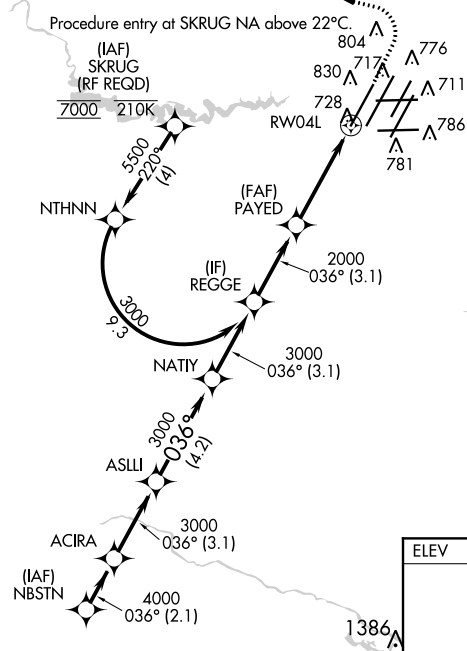
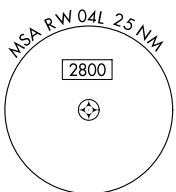
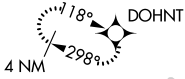
Simultaneous approach authorized. For uncompensated Baro-VNAV systems, procedure NA below -19°C or above 54°C. For inop ALS, increase RNP 0.30 all Cats visibility to RVR 6000.

ALSF-2



MISSED APPROACH: Climb to 1100 then climbing left turn to 4000 direct DOHNT and hold.

| | | | | | |
|--------------------------|--|-------------------------------------|---|---------------------------|-------|
| D-ATIS 133.675 | DETROIT APP CON 124.05 284.0 | METRO TOWER 135.0 317.725 | GND CON 121.8 (NW) 119.45 (NE) 132.725 (SW) 119.25 (SE) | CLNC DEL 120.65 | CPDLC |
|--------------------------|--|-------------------------------------|---|---------------------------|-------|



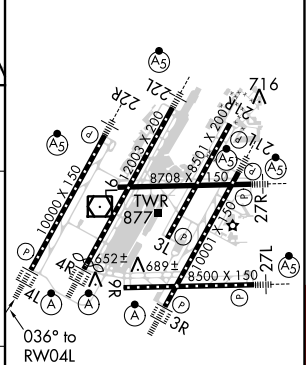
EC-1, 25 APR 2019 to 23 MAY 2019

EC-1, 25 APR 2019 to 23 MAY 2019

VGSI and RNAV glidepath not coincident (VGSI Angle 3.00/TCH 71).

| | | | | | | |
|-------------|---------|---------|-------------|--------|---------|---------|
| NBSTN | ACIRA | ASLLI | NATIY | REGGE | PAYED | RW04L |
| 4000 | 4000 | 3000 | 3000 | 3000 | 2000 | |
| GP 3.00° | 036° | | | | | |
| TCH 55 | | | | | | |
| | -2.1 NM | -3.1 NM | -4.2 NM | 3.1 NM | -3.1 NM | -4.1 NM |
| CATEGORY | A | | B | | C | D |
| RNP 0.15 DA | 970/26 | | 325 (400-½) | | | |
| RNP 0.30 DA | 1058/40 | | 413 (500-¾) | | | |

| | |
|----------|----------|
| ELEV 645 | TDZE 645 |
|----------|----------|



AUTHORIZATION REQUIRED

TDZ/CL Rwys 3R, 4L, 4R and 22R
REIL Rwys 3L, 9L, 9R and 21R
HIRL all runways