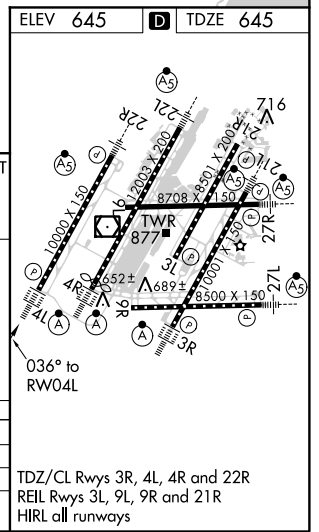
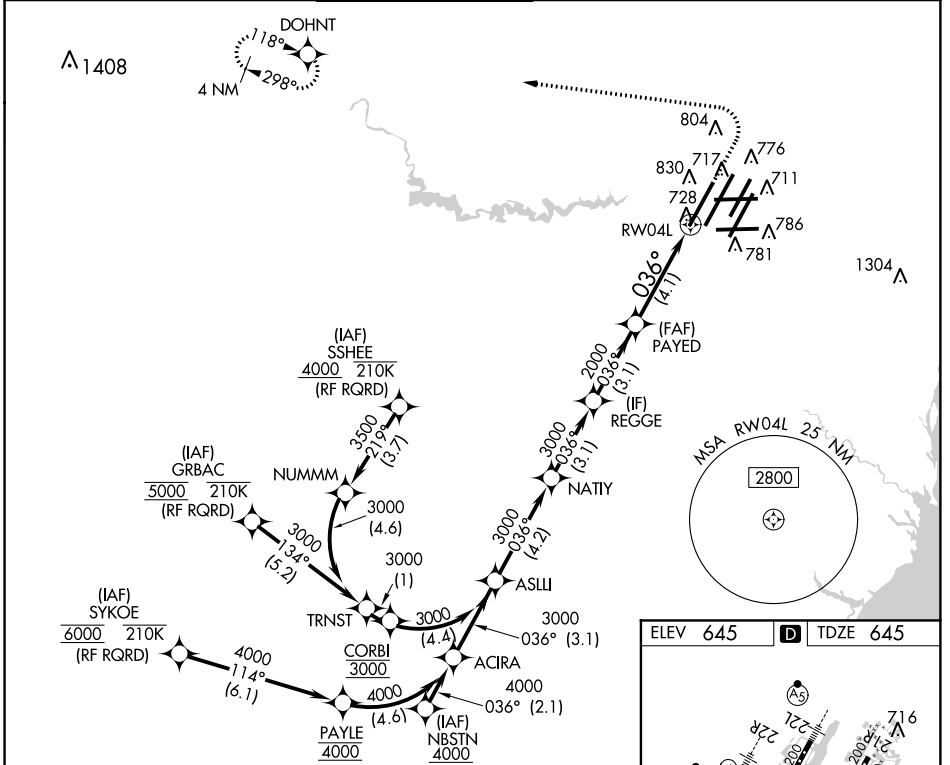


APP CRS	Rwy Idg	<b>10000</b>
<b>036°</b>	TDZE	<b>645</b>
	Apt Elev	<b>645</b>

# RNAV (RNP) X RWY 4L

DETROIT METROPOLITAN WAYNE COUNTY (DTW)

RNP AR APCH.		ALSF-2	MISSED APPROACH: Climb to 1100 then climbing left turn to 4000 direct DOHNT and hold.		
<p>▼ For uncompensated Baro-VNAV systems, procedure NA below -19°C (-2°F) or above 54°C (130°F). Simultaneous approach authorized. For inop ALS, increase RNP 0.30 DA all Cats visibility to RVR 6000.</p>					
D-ATIS	DETROIT APP CON	METRO TOWER	GND CON	CLNC DEL	CPDLC
<b>133.675</b>	<b>124.05 284.0</b>	<b>135.0 317.725</b>	<b>121.8 (NW)</b> <b>132.725 (SW)</b>	<b>119.45 (NE)</b> <b>119.25 (SE)</b>	<b>120.65</b>



VGSI and RNAV glidepath not coincident (VGSI Angle 3.00/TCH 71).

ASLLI	NATY	REGGE	PAYED	RW04L
3000	3000	3000	2000	
GP 3.00° TCH 55				
4.2 NM		3.1 NM	3.1 NM	4.1 NM

CATEGORY	A	B	C	D
RNP 0.15 DA		970/26	325 (400-½)	
RNP 0.30 DA		1058/40	413 (500-¾)	

**AUTHORIZATION REQUIRED**

EC-1, 25 APR 2019 to 23 MAY 2019

EC-1, 25 APR 2019 to 23 MAY 2019