

WAAS CH 42939 W22B	APP CRS 213°	Rwy Idg TDZE Apt Elev	10000 642 645
--	------------------------	-----------------------------	--

RNAV (GPS) Y RWY 22R

DETROIT METROPOLITAN WAYNE COUNTY (DTW)

▼ For uncompensated Baro-VNAV systems, LNAV/VNAV NA below -19°C (-2°F) or above 54°C (130°F). DME/DME RNP-0.3 NA. Simultaneous approach authorized. LNAV procedure NA during simultaneous operations. Use of FD or AP providing RNAV track guidance required during simultaneous operations.

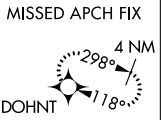
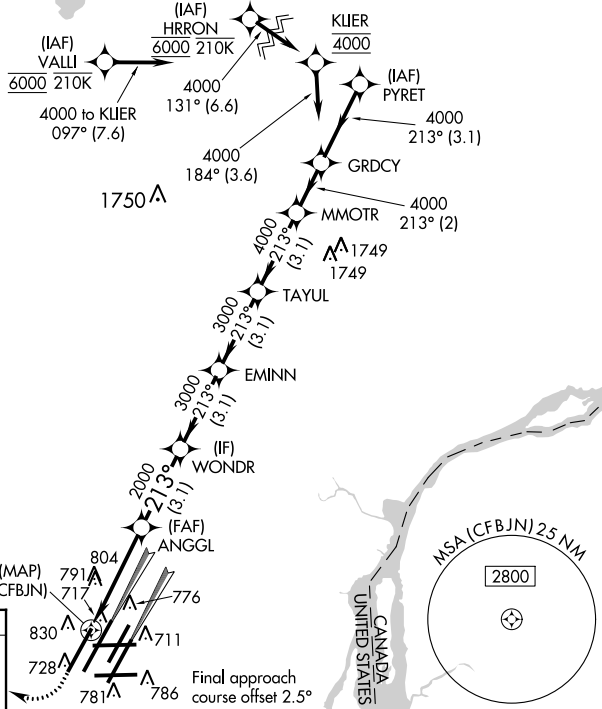
MALSRS



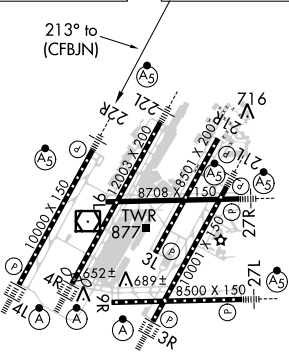
MISSED APPROACH: Climb to 1100 then climbing right turn to 4000 direct DOHNT and hold.

D-ATIS 133.675	DETROIT APP CON 124.05 284.0	METRO TOWER 135.0 317.725	GND CON 121.8 (NW) 119.45 (NE) 132.725 (SW) 119.25 (SE)	CLNC DEL 120.65	CPDLC
--------------------------	--	-------------------------------------	---	---------------------------	-------

RADAR REQUIRED



ELEV 645	D	TDZE 642
----------	----------	----------



1100	4000	DOHNT	VGSi and RNAV glidepath not coincident (VGSi Angle 3.00/TCH 71).			
* RNAV only			ANGGL	WONDRA	EMINN	TAYUL MMOTR GRDCY
1.1 NM	3.0 NM	3.1 NM	3.1 NM	3.1 NM	3.1 NM	2 NM
2000	3000	3000	4000	4000	4000	4000
						GP 3.00° TCH 55

CATEGORY	A	B	C	D
LPV DA		892/24	250 (300-1/2)	
LNAV/VNAV DA		1050/45	408 (500-7/8)	
LNAV MDA	1060/24	418 (500-1/2)	1060/40	418 (500-3/4)
C CIRCLING	1180-1	535 (600-1)	1180-1 1/2 535 (600-1 1/2)	1240-2 595 (600-2)

TDZ/CL Rwy 3R, 4L, 4R and 22R
HIRL all runways
REIL Rwy 3L, 9L, 9R and 21R

EC-1, 25 APR 2019 to 23 MAY 2019

EC-1, 25 APR 2019 to 23 MAY 2019