

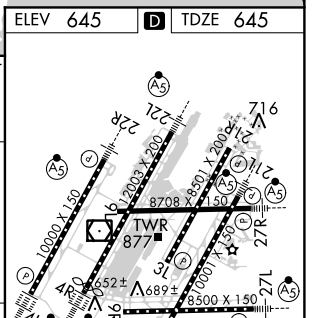
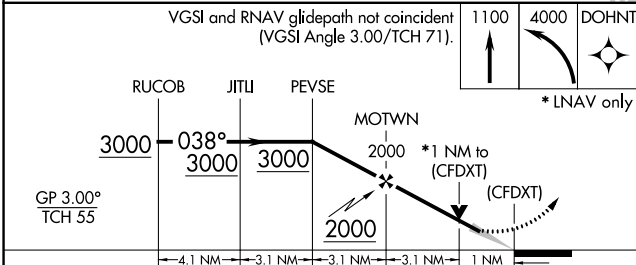
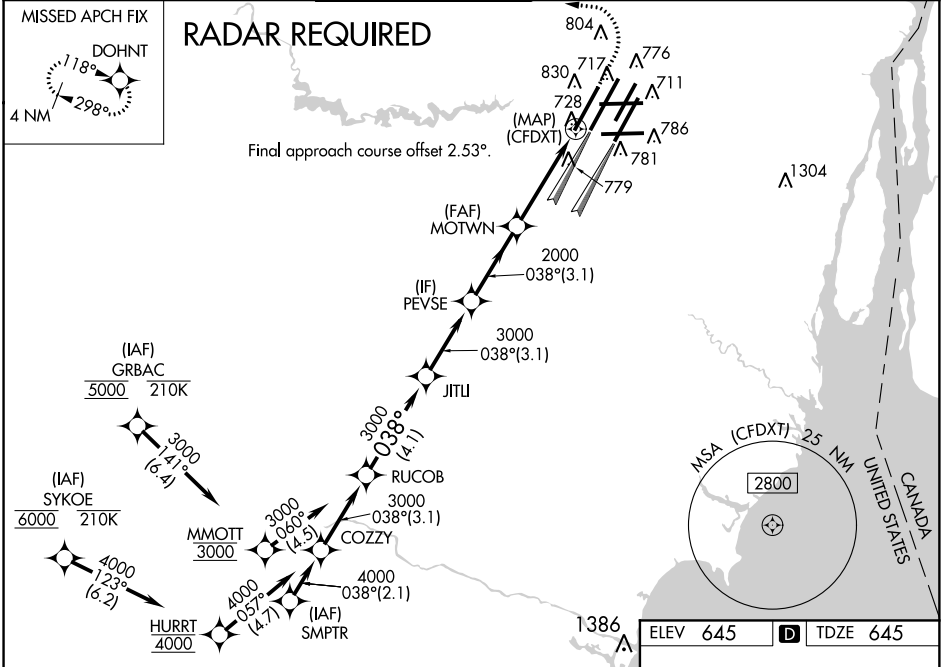
WAAS CH <b>82439</b> <b>W04A</b>	APP CRS <b>038°</b>	Rwy Idg <b>10000</b> TDZE <b>645</b> Apt Elev <b>645</b>
--	------------------------	--

# RNAV (GPS) Y RWY 4L

DETROIT METROPOLITAN WAYNE COUNTY (DTW)

<p><b>▽</b> For uncompensated Baro-VNAV systems, LNAV/VNAV NA below -1°C (-2°F) or above 54°C (130°F). DME/DME RNP-0.3 NA. Simultaneous approach authorized. LNAV procedure NA during simultaneous operations. Use of FD or AP providing RNAV track guidance required during simultaneous operations.</p>	<p>ALSF-2</p>	<p>MISSED APPROACH: Climb to 1100 then climbing left turn to 4000 direct DOHNT and hold.</p>
---	---------------	--

D-ATIS <b>133.675</b>	DETROIT APP CON <b>124.05 284.0</b>	METRO TOWER <b>135.0 317.725</b>	GND CON <b>121.8 (NW) 119.45 (NE)</b> <b>132.725 (SW) 119.25 (SE)</b>	CLNC DEL <b>120.65</b>	CPDLC
--------------------------	--	-------------------------------------	---	---------------------------	-------



CATEGORY	A	B	C	D
LPV DA		895/24	250 (300-½)	
LNAV/VNAV DA		1068/45	423 (500-¾)	
LNAV MDA	1040/24	395 (400-½)	1040/35	395 (400-¾)
<b>C</b> CIRCLING	1180-1	535 (600-1)	1180-1½ 535 (600-1½)	1240-2 595 (600-2)

TDZ/CL Rwsy 3R, 4L, 4R and 22R  
REIL Rwsy 3L, 9L, 9R and 21R  
HIRL all runways

EC-1, 25 APR 2019 to 23 MAY 2019

EC-1, 25 APR 2019 to 23 MAY 2019