

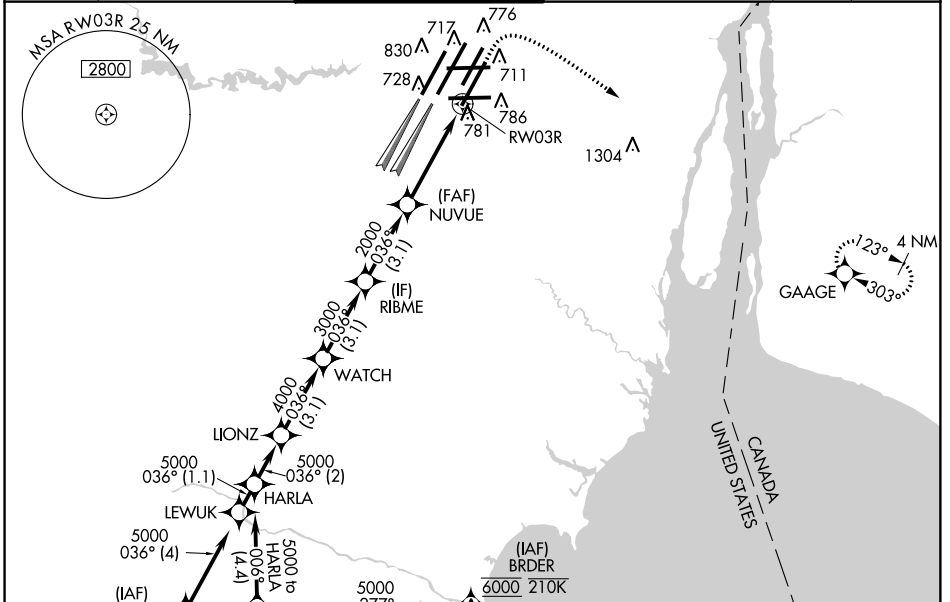
WAAS CH 61304 W03A	APP CRS 036°	Rwy Idg 10001 TDZE 633 Apt Elev 645
--	------------------------	--

RNAV (GPS) Z RWY 3R

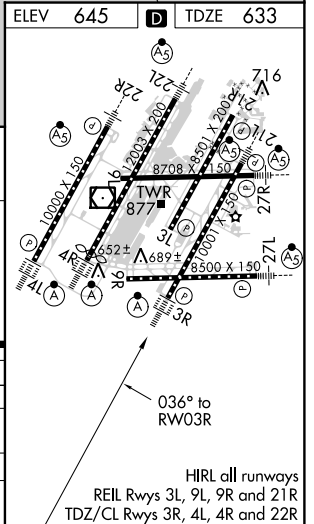
DETROIT METROPOLITAN WAYNE COUNTY (DTW)

RNP APCH.	ALSF-2 	MISSED APPROACH: Climb to 1100 then climbing right turn to 4000 direct GAAGE and hold, continue climb-in-hold to 4000.
<p>▽ For uncompensated Baro-VNAV systems, LNAV/VNAV NA below -19°C (-2°F) or above 54°C (130°F). Simultaneous approach authorized. LNAV procedure NA during simultaneous operations. Use of FD or AP required during simultaneous operations.</p>		

D-ATIS 133.675	DETROIT APP CON 125.15 284.0	METRO TOWER 118.4 317.725	GND CON 121.8 (NW) 119.45 (NE) 132.725 (SW) 119.25 (SE)	CLNC DEL 120.65	CPDLC
--------------------------	--	-------------------------------------	---	---------------------------	-------



	ELEV 645	D	TDZE 633
<p>VGSI and RNAV glidepath not coincident (VGSI Angle 3.00/TCH 70).</p>			
HARLA	LIONZ	WATCH	RIBME
5000-036°	5000	4000	3000
GP 3.00°			2000
TCH 54			
	2 NM	3.1 NM	3.1 NM
			2.9 NM
			1.2 NM
CATEGORY	A	B	C
LPV DA		833/18	200 (200-½)
LNAV/VNAV DA		1013/35	380 (400-¾)
LNAV MDA	1080/24	447 (500-½)	1080/45 447 (500-¾)
C CIRCLING	1180-1	535 (600-1)	1180-1½ 535 (600-1½) 1240-2 595 (600-2)



EC-1, 25 APR 2019 to 23 MAY 2019

EC-1, 25 APR 2019 to 23 MAY 2019