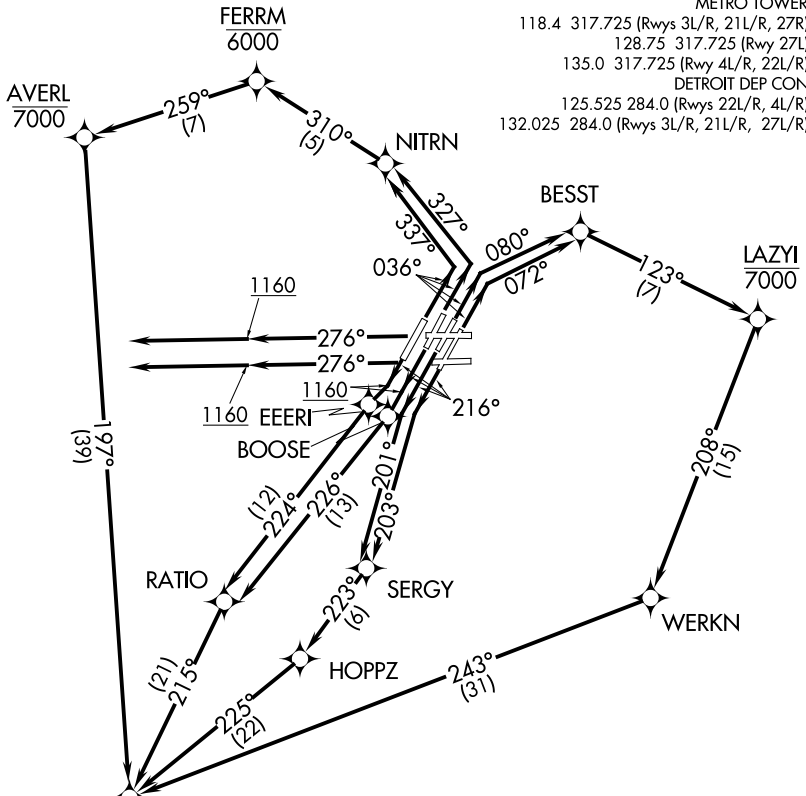


# SNDRS ONE DEPARTURE (RNAV) Departure Routes

**TOP ALTITUDE:  
ASSIGNED BY ATC**

D-ATIS 118.125  
 CLNC DEL 120.65  
 CPDLC  
 GND CON  
 121.8 (NW) 119.45 (NE)  
 132.725 (SW) 119.25 (SE)  
 METRO TOWER  
 118.4 317.725 (Rwys 3L/R, 21L/R, 27R)  
 128.75 317.725 (Rwy 27L)  
 135.0 317.725 (Rwy 4L/R, 22L/R)  
 DETROIT DEP CON  
 125.525 284.0 (Rwys 22L/R, 4L/R)  
 132.025 284.0 (Rwys 3L/R, 21L/R, 27L/R)



**TAKEOFF MINIMUMS:**

Rwys 3L/R, 4L/R, 21L/R: Standard.  
 Rwys 22L/R, 27L/R: Standard with minimum  
 climb of 500' per NM to 1160.

- NOTE: RNAV 1.
- NOTE: RADAR required.
- NOTE: DME/DME/IRU or GPS required.
- NOTE: Turbojet departures at/above 10000,  
maintain 280K until advised by ATC.

(NARRATIVE ON FOLLOWING PAGE)

NOTE: Chart not to scale.

◆ SNDRS  
 See following  
 page for  
 Transition Routes

EC-1, 25 APR 2019 to 23 MAY 2019

EC-1, 25 APR 2019 to 23 MAY 2019