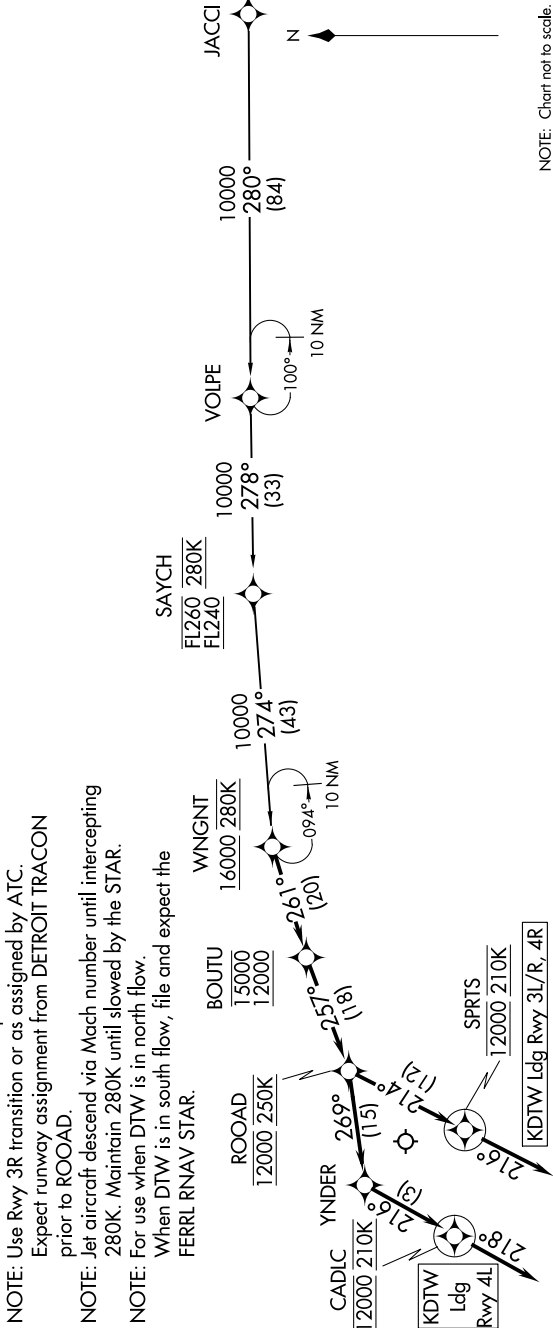


# WNGNT ONE ARRIVAL (RNAV)

D-ATIS 133.675  
DETROIT APP CON  
126.225 284.0



## ARRIVAL ROUTE DESCRIPTION

### JACCI TRANSITION (JACCI.WNGNT1)

From WNGNT on track 261° to cross BOUTU between 12000 and 15000, then on track 257° to cross ROOAD at 12000 and at 250K. LANDING RUNWAYS 3L/R, 4R: From ROOAD on track 214° to cross SPRTS at 12000 and at 210K, then on track 216°. Expect RADAR vectors to final approach course.

LANDING RUNWAY 4L: From ROOAD on track 269° to YNDER, then on track 216° to cross CADLW at 12000 and at 210K, then on track 218°. Expect RADAR vectors to final approach course.

# WNGNT ONE ARRIVAL (RNAV)