

(ZETTR1.ZETTR) 18200

AL-119 (FAA)

# ZETTR ONE DEPARTURE (RNAV) Transition Routes

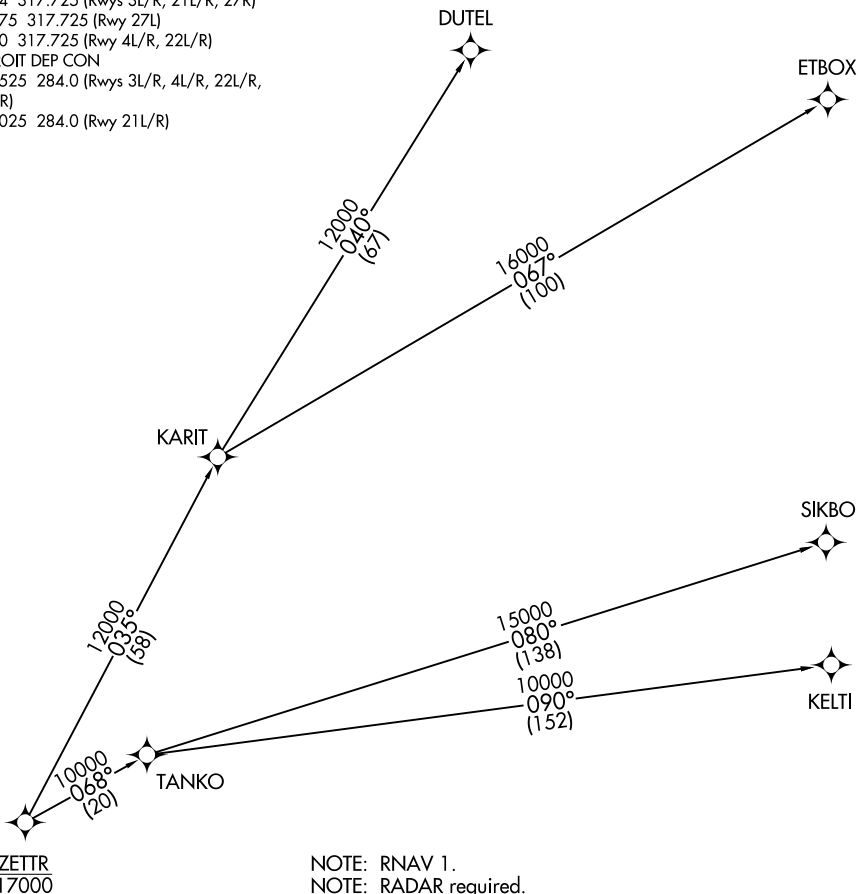
DETROIT METROPOLITAN WAYNE COUNTY (DTW)

Transition Routes

DETROIT, MICHIGAN

D-ATIS 118.125  
 CLNC DEL 120.65  
 CPDLC  
 GND CON  
 121.8 (NW) 119.45 (NE)  
 132.725 (SW) 119.25 (SE)  
 METRO TOWER  
 118.4 317.725 (Rwys 3L/R, 21L/R, 27R)  
 128.75 317.725 (Rwy 27L)  
 135.0 317.725 (Rwy 4L/R, 22L/R)  
 DETROIT DEP CON  
 125.525 284.0 (Rwys 3L/R, 4L/R, 22L/R, 27L/R)  
 132.025 284.0 (Rwy 21L/R)

**TOP ALTITUDE:  
 ASSIGNED BY ATC**



- NOTE: RNAV 1.
- NOTE: RADAR required.
- NOTE: DME/DME/IRU or GPS required.
- NOTE: Turbojet departures at/above 10000, maintain 280K until advised by ATC.

(NARRATIVE CONTINUED ON FOLLOWING PAGE)

NOTE: Chart not to scale.

EC-1, 25 APR 2019 to 23 MAY 2019

EC-1, 25 APR 2019 to 23 MAY 2019

# ZETTR ONE DEPARTURE (RNAV) Transition Routes

(ZETTR1.ZETTR) 19JUL18

DETROIT, MICHIGAN

DETROIT METROPOLITAN WAYNE COUNTY (DTW)