

WAAS CH 53337 W23A	APP CRS 231°	Rwy Idg TDZE Apt Elev	5300 3840 3858
--	------------------------	-----------------------------	---

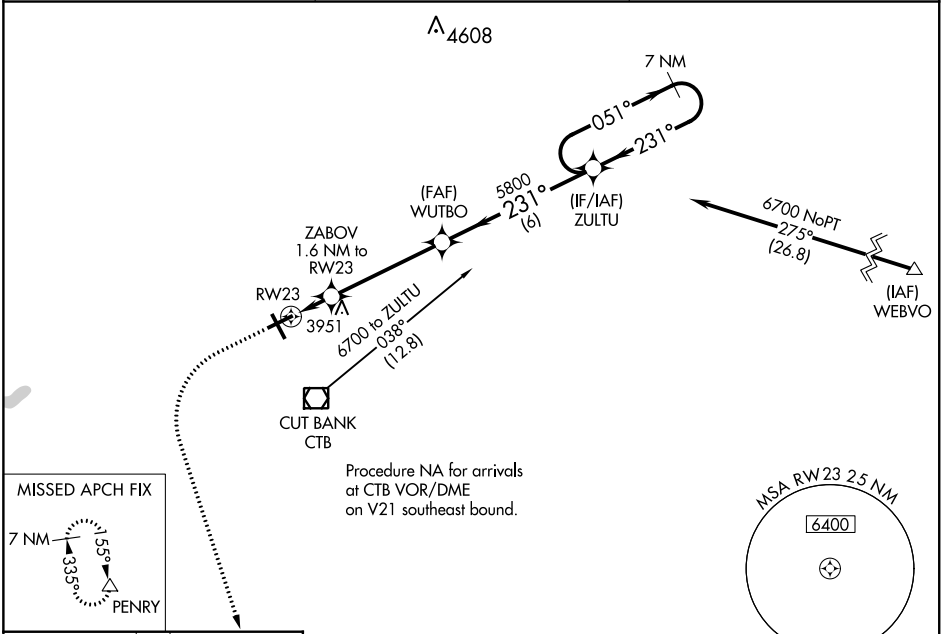
RNAV (GPS) RWY 23

CUT BANK INTL (CTB)

⚠ For uncompensated Baro-VNAV systems, LNAV/VNAV NA below -25°C (-13°F) or above 51°C (124°F).
⚠ DME/DME RNP-0.3 NA.

MISSED APPROACH: Climb to 4400 then climbing left turn to 9000 direct PENRY and hold.

ASOS 119.025	SALT LAKE CITY CENTER 133.4 285.4	UNICOM 123.0 (CTAF) 0
------------------------	---	---------------------------------

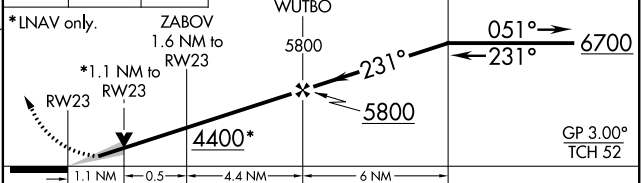
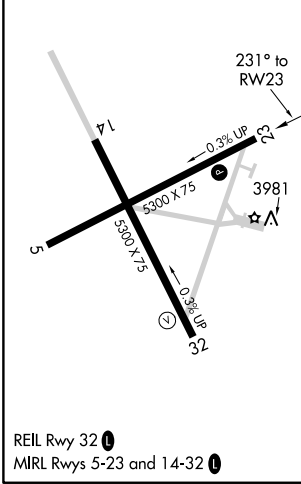


NW-1, 25 APR 2019 to 23 MAY 2019

NW-1, 25 APR 2019 to 23 MAY 2019

ELEV 3858	TDZE 3840
------------------	------------------

4400 9000 PENRY VGS1 and RNAV glidepath not coincident (VGS1 Angle 3.00/TCH 39).
7 NM Holding pattern ZULTU



CATEGORY	A	B	C	D
LPV DA		4040-1	200 (200-1)	
LNAV/VNAV DA		4090-1	250 (300-1)	
LNAV MDA		4220-1	380 (400-1)	
CIRCLING	4280-1 422 (500-1)	4320-1 462 (500-1)	4400-1½ 542 (600-1½)	4620-2½ 762 (800-2½)