

WAAS CH 66041 W06A	APP CRS 057°	Rwy Idg 10000 TDZE 1103 Apt Elev 1159
--	------------------------	--

RNAV (GPS) Z RWY 6

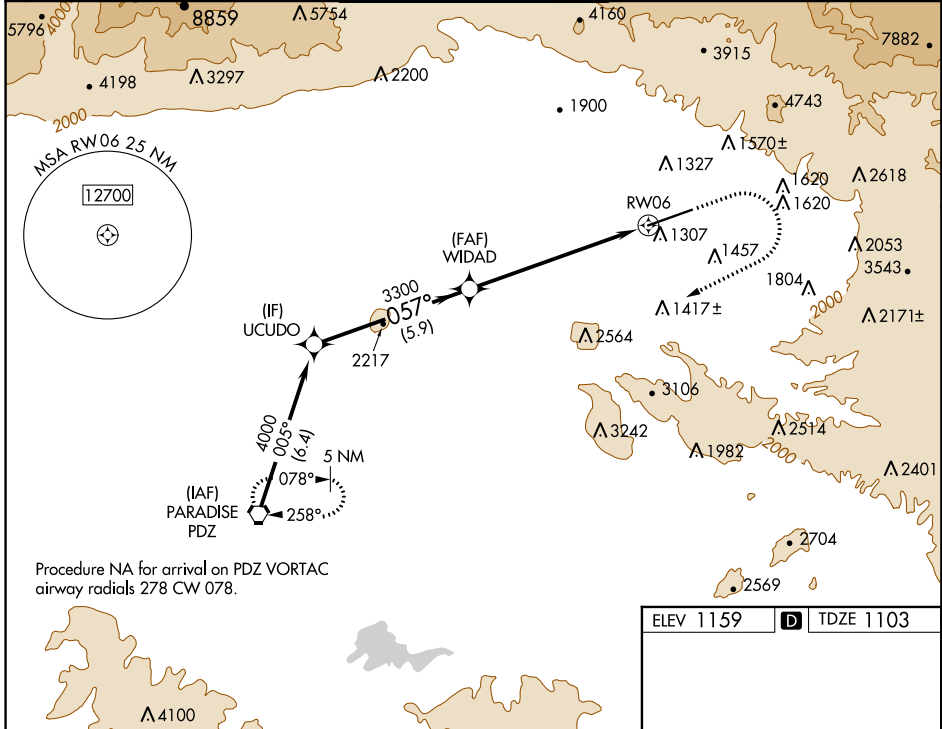
SAN BERNARDINO INTL (SBD)

RNP APCH

▼ Circling NA northwest of Rwy 6-24. When local altimeter setting not received, use Ontario altimeter setting and increase DA to 1426 feet and all visibilities ¼ SM; increase all MDA 80 feet and LNAV Cats C/D and Circling Cat C visibility ¼ SM.

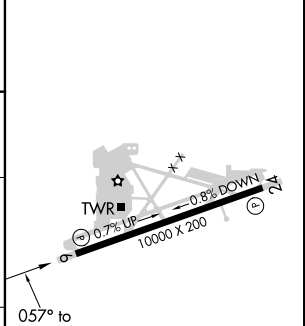
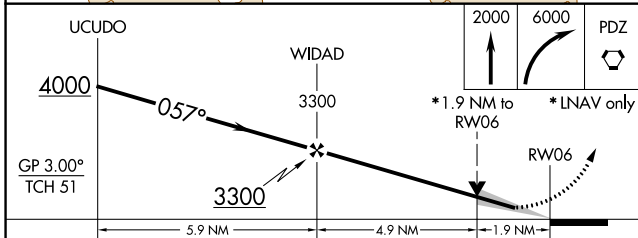
MISSED APPROACH: Climb to 2000 then climbing right turn to 6000 direct PDZ VORTAC and hold, continue climb-in-hold to 6000. # Missed approach requires minimum climb of 340 feet per NM to 4000; if unable to meet climb gradient, see RNAV (GPS) Y RWY 6.

ATIS 124.175	SOCAL APP CON 127.0 318.2	SAN BERNARDINO TOWER* 119.45 (CTAF) 0	GND CON 121.8	UNICOM 122.975
------------------------	-------------------------------------	---	-------------------------	--------------------------



Procedure NA for arrival on PDZ VORTAC airway radials 278 CW 078.

ELEV 1159	D TDZE 1103
-----------	--------------------



CATEGORY	A	B	C	D
LPV DA#	1353-¾		250 (200-¾)	
LNAV MDA #	1740-1	637 (600-1)	1740-1¾	637 (600-1¾)
C CIRCLING	1740-1	581 (600-1)	1760-1¾	2640-3
			601 (700-1¾)	1481 (1500-3)

HIRL Rwy 6-24 **0**
REIL Rws 6 and 24 **0**

SW-3, 25 APR 2019 to 23 MAY 2019

SW-3, 25 APR 2019 to 23 MAY 2019