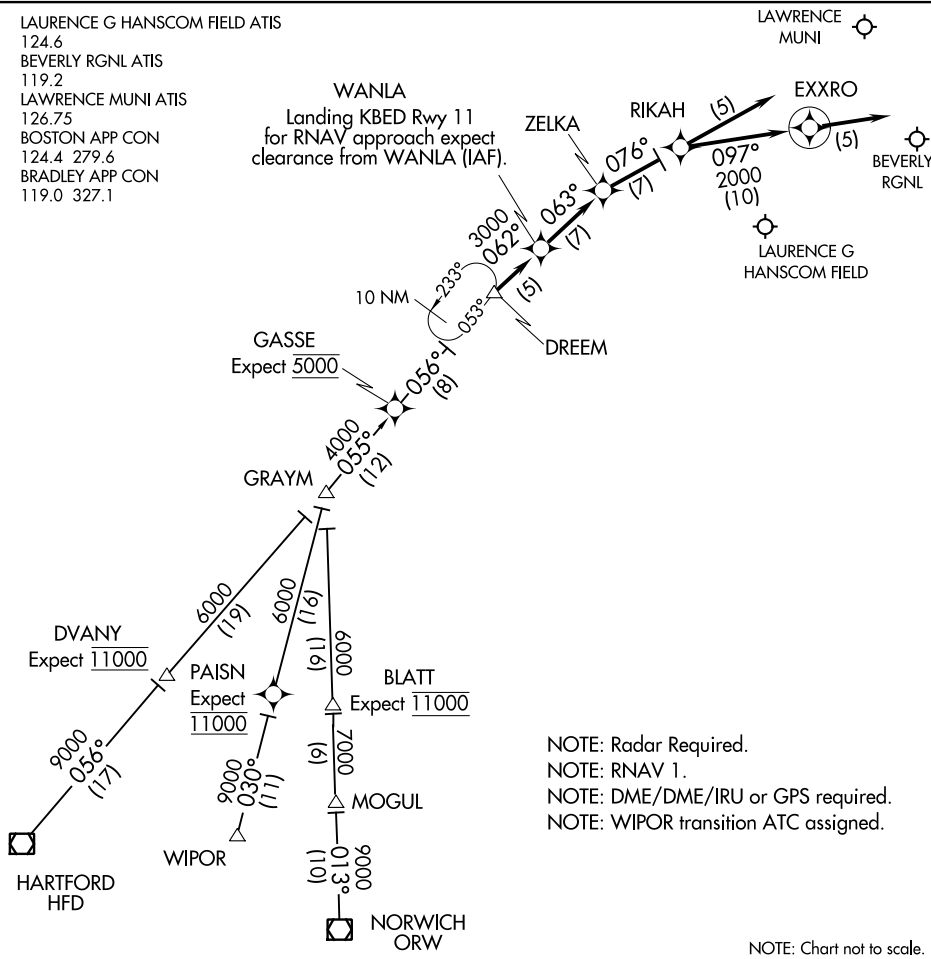


DREEM TWO ARRIVAL (RNAV)

BEDFORD, MASSACHUSETTS

LAURENCE G HANSCOM FIELD ATIS
 124.6
 BEVERLY RGNL ATIS
 119.2
 LAWRENCE MUNI ATIS
 126.75
 BOSTON APP CON
 124.4 279.6
 BRADLEY APP CON
 119.0 327.1

WANLA
 Landing KBED Rwy 11
 for RNAV approach expect
 clearance from WANLA (IAF).



NOTE: Radar Required.
 NOTE: RNAV 1.
 NOTE: DME/DME/IRU or GPS required.
 NOTE: WIPOR transition ATC assigned.

NOTE: Chart not to scale.

HARTFORD TRANSITION (HFD.DREEM2):
NORWICH TRANSITION (ORW.DREEM2):
WIPOR TRANSITION (WIPOR.DREEM2):

LANDING BVY ALL RWYS, BED RWY 23 & 29: From DREEM on track 062° to WANLA , then on track 063° to ZELKA, then on track 076° to RIKAH, then on track 097° to EXXRO, then on track 097°. Expect radar vectors to destination airport and final approach course.

LANDING BED RWY 11: From DREEM on track 062° to WANLA, then on track 063° to ZELKA. Expect ILS approach.

LANDING LWM ALL RWYS: From DREEM on track 062° to WANLA, then on track 063° to ZELKA, then on track 076° to RIKAH, then on track 076°, expect radar vectors to final approach course.

DREEM TWO ARRIVAL (RNAV)

BEDFORD, MASSACHUSETTS