

# ZELKA TWO ARRIVAL (RNAV)

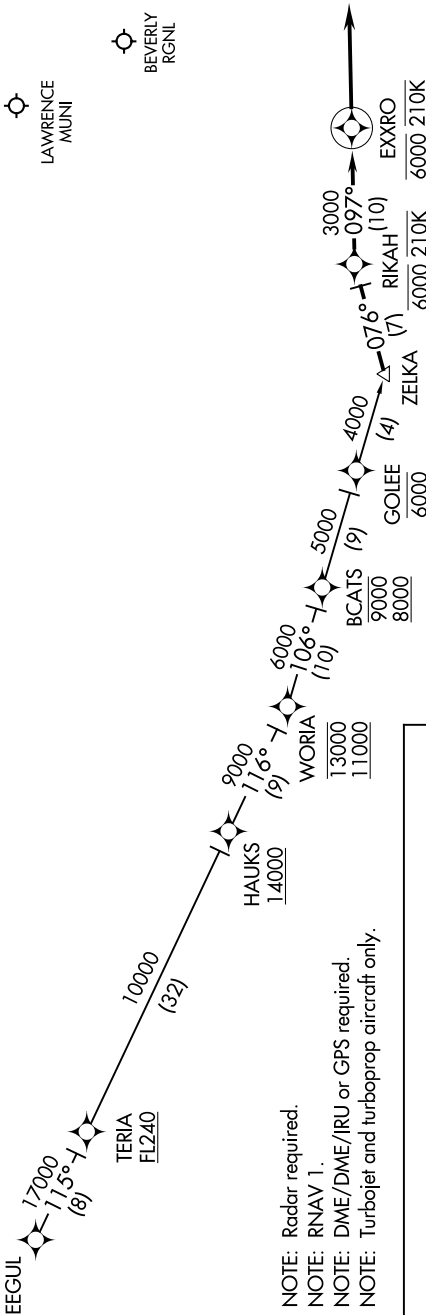
BEDFORD, MASSACHUSETTS

BOSTON APP CON  
124.4 279.6  
LAURENCE G HANSCOM FIELD ATIS  
124.6  
BEVERLY RGNL ATIS  
119.2  
LAWRENCE MUNI ATIS  
126.75

LAWRENCE  
MUNI

BEVERLY  
RGNL

LAURENCE G  
HANSCOM FIELD



NOTE: Chart not to scale.

NE-1, 25 APR 2019 to 23 MAY 2019

NE-1, 25 APR 2019 to 23 MAY 2019

# ZELKA TWO ARRIVAL (RNAV)

BEDFORD, MASSACHUSETTS

## ARRIVAL ROUTE DESCRIPTION

### EEGUL TRANSITION (EEGUL.ZELKA2):

From ZELKA on track 076° to cross RIKAH at 6000 and 210K, then on track 097° to cross EXXRO at 6000 and 210K, then on track 097°. Expect radar vectors to destination airport and final approach course.

- NOTE: Radar required.
- NOTE: RNAV 1.
- NOTE: DME/DME/IRU or GPS required.
- NOTE: Turbojet and turboprop aircraft only.