

RNAV (GPS) RWY 2

WATSONVILLE MUNI (WVI)

WAAS CH 61330 W02A	APP CRS 018°	Rwy Idg 4501
		TDZE 152
		Apt Elev 163

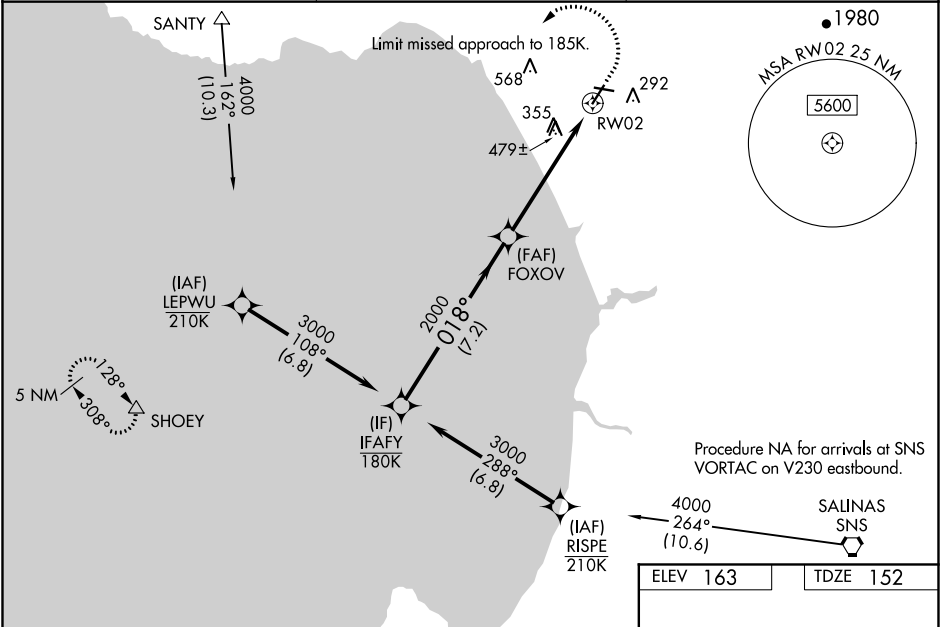
⚠ Baro-VNAV and VDP NA when using Monterey altimeter setting. For uncompensated Baro-VNAV systems, LNAV/VNAV NA below -2°C (29°F) or above 54°C (130°F). Circling Rwy 20, 27 NA at night. DME/DME RNP-0.3 NA. Rwy 2 helicopter visibility reduction below ¾ SM NA. When local altimeter setting not received, use Monterey altimeter setting: increase LPV DA to 520, LNAV/VNAV DA to 881 feet; increase all MDAs 80 feet and visibility Cat C ½ SM and LNAV Cat D ½ mile. Circling NA west of Rwy 2-20.

MISSED APPROACH:
Climb to 650 then climbing left turn to 6000 direct SHOELY and hold, continue climb-in-hold to 6000.

ASOS
132.275

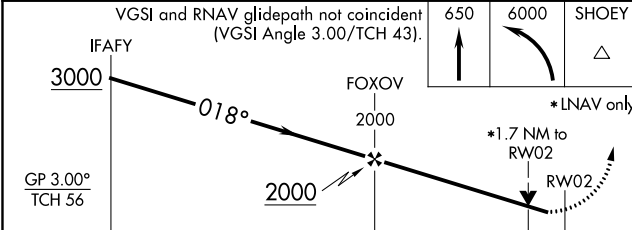
NORCAL APP CON
127.15 307.125

UNICOM
122.8 (CTAF)



SW-2, 25 APR 2019 to 23 MAY 2019

SW-2, 25 APR 2019 to 23 MAY 2019



ELEV 163	TDZE 152
----------	----------

The inset chart shows RWY 20 and RWY 27:
 - **RWY 20:** 4501' x 149', 0.4% UP.
 - **RWY 27:** 3998' x 98', 0.7% UP.
 - **Obstacles:** 285±', 264±', and 202'.
 - **Angles:** 018° to RWY 20.
 - **MIRL:** RWY 2-20 (circle with '1') and RWY 2 (circle with '1').

CATEGORY	A	B	C	D
LPV DA		458-1	306 (300-1)	
LNAV/VNAV DA		819-2¼	667 (700-2¼)	
LNAV MDA	740-1	588 (600-1)	740-1¾	588 (600-1¾)
CIRCLING	740-1	577 (600-1)	740-1¾	740-2
			577 (600-1¾)	577 (600-2)