

WAAS CH 90426 W15A	APP CRS 154°	Rwy Idg TDZE Apt Elev	5002 357 357
--	------------------------	-----------------------------	---

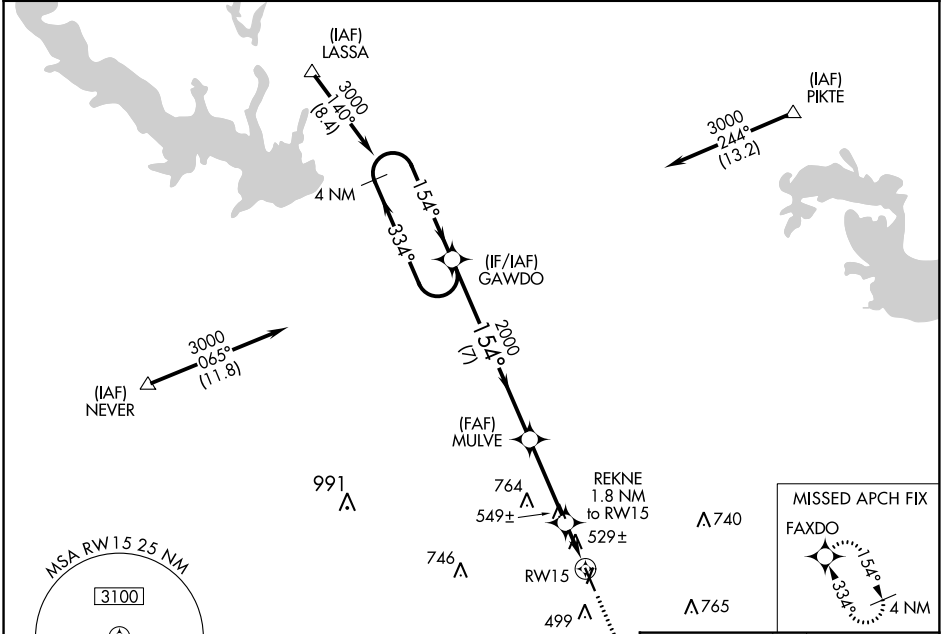
RNAV (GPS) RWY 15

HARRISON COUNTY (ASL)

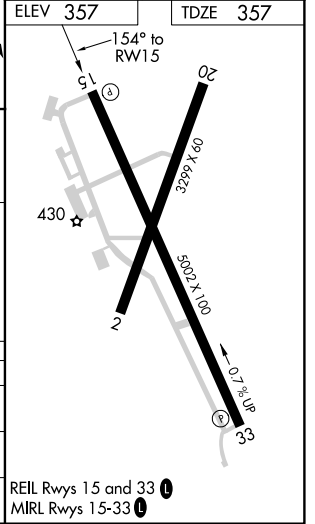
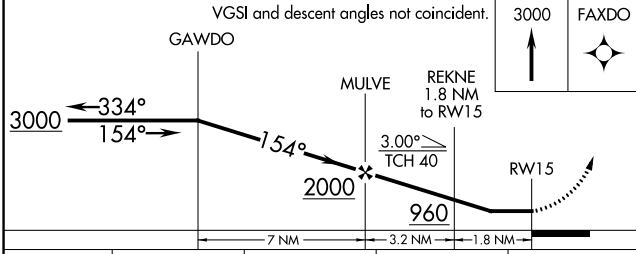
▽ DME/DME RNP-0.3 NA. Helicopter visibility reduction below 1 SM NA.
△ NA When local altimeter setting not received, use Longview altimeter setting and increase all MDA 60 feet; increase LP Cat C visibility 1/8 mile.
 Night Landing: Rwy 2, 15, 20 NA.

MISSED APPROACH: Climb to 3000 direct FAXDO and hold.

AWOS-3 118.675	LONGVIEW APP CON ★ 124.275 257.975	UNICOM 122.8 (CTAF) 0
--------------------------	--	--



ELEV 357	TDZE 357
-----------------	-----------------



CATEGORY	A	B	C	D
LP MDA	780-1	423 (500-1)	780-1¼ 423 (500-1¼)	NA
LNVA MDA	800-1	443 (500-1)	800-1⅜ 443 (500-1⅜)	NA
CIRCLING	840-1	483 (500-1)	840-1½ 544 (600-1½)	NA

SC-2, 25 APR 2019 to 23 MAY 2019

SC-2, 25 APR 2019 to 23 MAY 2019