

WAAS CH <b>86926</b> <b>W33A</b>	APP CRS <b>334°</b>	Rwy Idg TDZE Apt Elev	<b>5002</b> <b>349</b> <b>357</b>
--	------------------------	-----------------------------	---

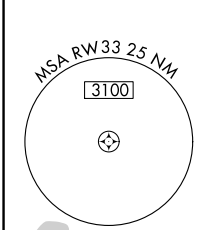
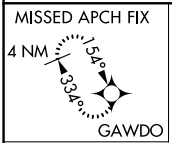
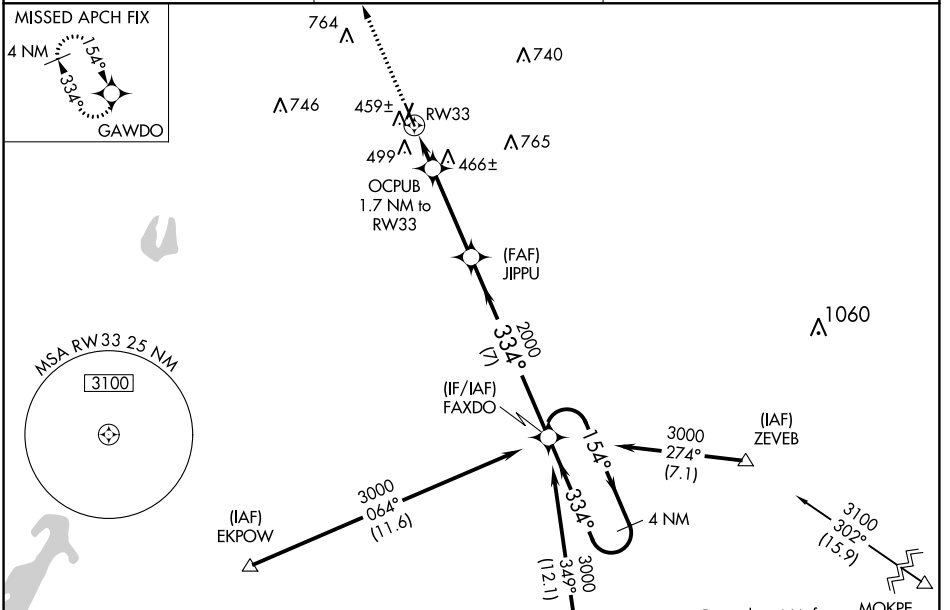
# RNAV (GPS) RWY 33

HARRISON COUNTY (ASL)

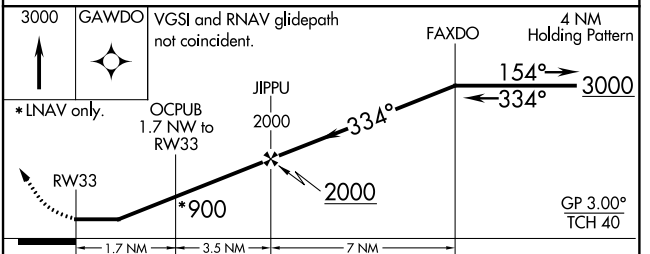
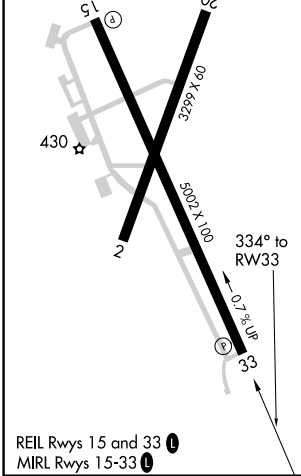
**▼** Baro-VNAV NA when using Longview altimeter setting. For uncompensated Baro-VNAV systems, LNAV/VNAV NA below -5°C (23°F) or above 40°C (104°F). DME/DME RNP-0.3 NA.  
**▲ NA** Helicopter visibility reduction below ¾ SM NA. When local altimeter setting not received, use Longview altimeter setting and increase all DA 52 feet and all MDA 60 feet; increase LPV all Cats visibility ½ mile, LNAV/VNAV all Cats and LNAV Cat C visibility ¼ mile.  
 Night Landing: Rwy 2, 15, 20 NA.

**MISSED APPROACH:**  
Climb to 3000 direct GAWDO and hold.

AWOS-3 <b>118.675</b>	LONGVIEW APP CON ★ <b>124.275 257.975</b>	UNICOM <b>122.8</b> (CTAF) <b>0</b>
--------------------------	--	--



ELEV 357	TDZE 349
----------	----------



CATEGORY	A	B	C	D
LPV DA		635-1 286 (300-1)		NA
LNAV/VNAV DA		658-1 309 (300-1)		NA
LNAV MDA	720-1	371 (400-1)	720-1 ⅛ 371 (400-1 ⅛)	NA
CIRCLING	840-1	483 (500-1)	840-1 ½ 483 (500-1 ½)	NA

SC-2, 25 APR 2019 to 23 MAY 2019

SC-2, 25 APR 2019 to 23 MAY 2019