

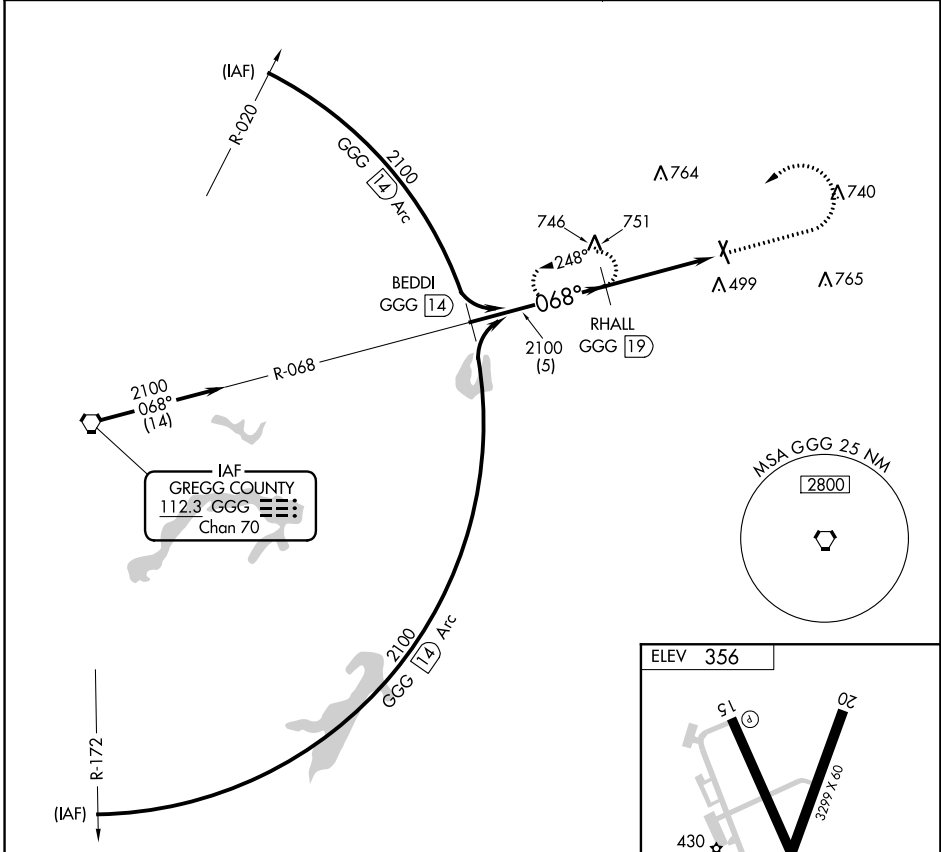
VORTAC GGG 112.3 Chan 70	APP CRS 068°	Rwy Idg TDZE Apt Elev	N/A N/A 356
---------------------------------------	------------------------	-----------------------------	--

VOR/DME-A
HARRISON COUNTY (ASL)

When local altimeter setting not received, use Longview altimeter setting and increase all MDA 60 feet; increase Cat B visibility to 1½. Night Landing: Rwy 2, 15, 20 NA. Helicopter visibility reduction below 1 SM NA.

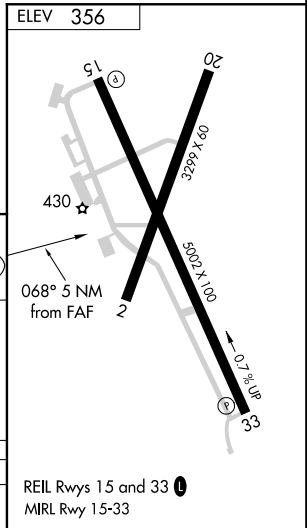
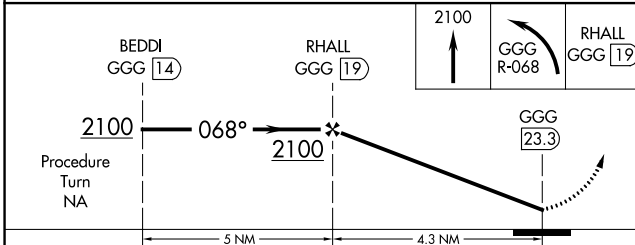
MISSED APPROACH: Climb to 2100 then left turn via GGG R-068 to RHALL/GGG 19 DME and hold.

AWOS-3 118.675	LONGVIEW APP CON ★ 124.275 257.975	UNICOM 122.8 (CTAF) 0
--------------------------	--	---------------------------------



SC-2, 25 APR 2019 to 23 MAY 2019

SC-2, 25 APR 2019 to 23 MAY 2019



CATEGORY	A	B	C	D
CIRCLING	1300-1¼	944 (1000-1¼)		NA