

LOC/DME I-GFK 109.1 Chan 28	APP CRS 174°	Rwy Idg TDZE Apt Elev	7351 843 845
---	------------------------	-----------------------------	---

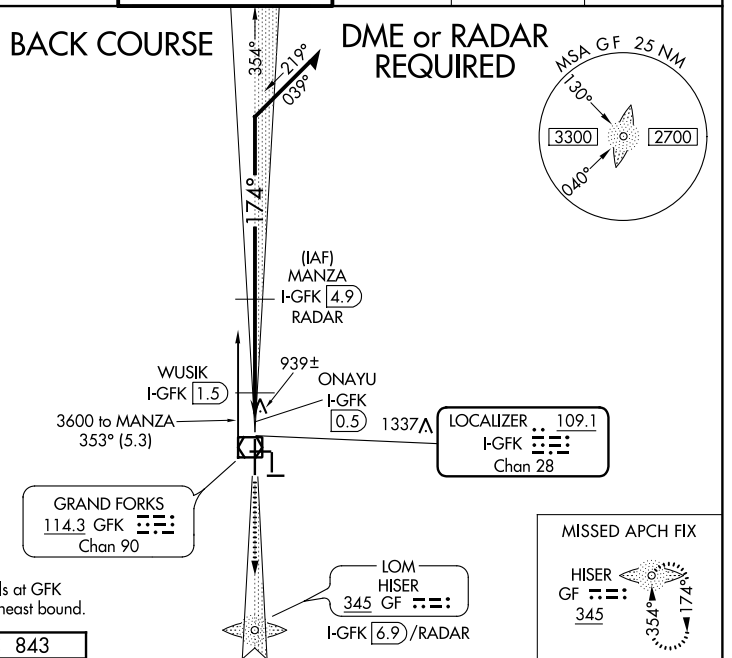
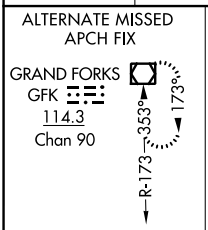
LOC BC RWY 17R

GRAND FORKS INTL (GFK)

⚠ Visibility reduction by helicopters NA. DME or RADAR or ADF required. When local altimeter setting not received, use Crookston altimeter setting and increase all MDA 80 feet, increase S-17R Cats C/D visibility and WUSIK fix minimums S-17R Cats C/D visibility 1/4 mile.

MISSED APPROACH: Climb to 2600 via I-GFK south course to HISER LOM /I-GFK 6.9 DME/RADAR and hold.

ATIS 119.4	GRAND FORKS APP CON 118.1 318.1	GRAND FORKS TOWER* 118.4(CTAF) 350.35	GND CON 124.575	CLNC DEL 135.725	UNICOM 122.95
----------------------	---	---	---------------------------	----------------------------	-------------------------

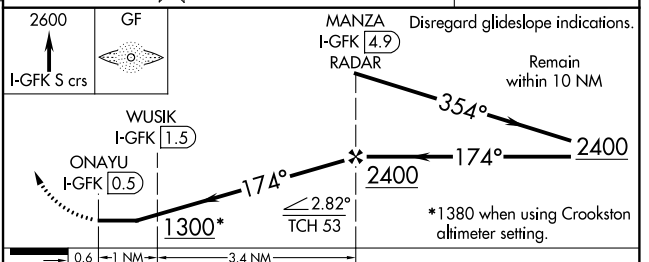
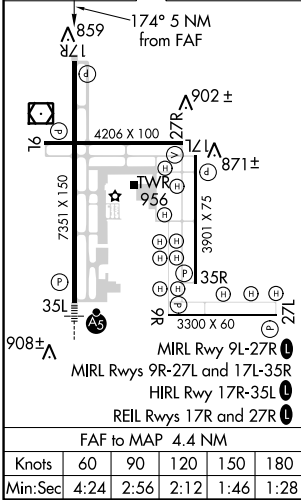


GRAND FORKS GFK 114.3 Chan 90

⚠ 1476

Procedure NA for arrivals at GFK VOR/DME via V55 northeast bound.

ELEV 845	D	TDZE 843
-----------------	----------	-----------------



CATEGORY	A	B	C	D
S-17R	1300-1	457 (500-1)	1300-1¼ 457 (500-1¼)	1300-1½ 457 (500-1½)
CIRCLING	1300-1	455 (500-1)	1300-1½ 455 (500-1½)	1400-2 555 (600-2)
WUSIK FIX MINIMUMS				
S-17R	1200-1 357 (400-1)			1200-1¼ 357 (400-1¼)
CIRCLING	1280-1 435 (500-1)	1300-1 455 (500-1)	1300-1½ 455 (500-1½)	1400-2 555 (600-2)

NC-1, 25 APR 2019 to 23 MAY 2019

NC-1, 25 APR 2019 to 23 MAY 2019