

WAAS CH 58104 W09A	APP CRS 084°	Rwy Idg TDZE Apt Elev	4206 843 845
----------------------------------------	------------------------	-----------------------------	-----------------------------------------

RNAV (GPS) RWY 9L

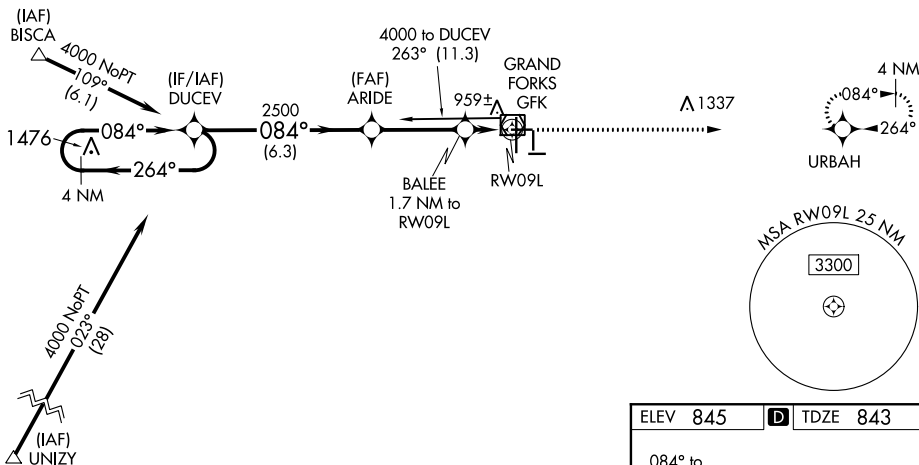
GRAND FORKS INTL (GFK)

⚠ For uncompensated Baro-VNAV systems, LNAV/VNAV NA below -16°C (4°F) or above 47°C (116°F). DME/DME RNP-0.3 NA. When local altimeter setting not received, use Crookston altimeter setting and increase all DA 62 feet and all MDA 80 feet, increase LNAV/VNAV all Cats and LNAV Cat C/D visibilities ½ mile. Baro-VNAV and VDP NA when using Crookston altimeter setting.

MISSED APPROACH: Climb to 2800 direct URBAN and hold.

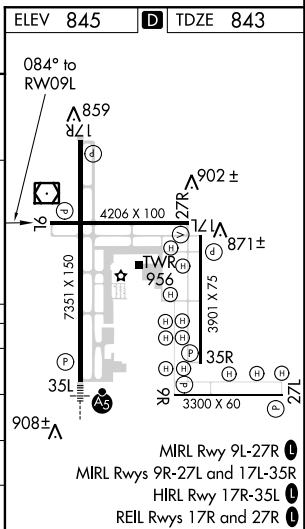
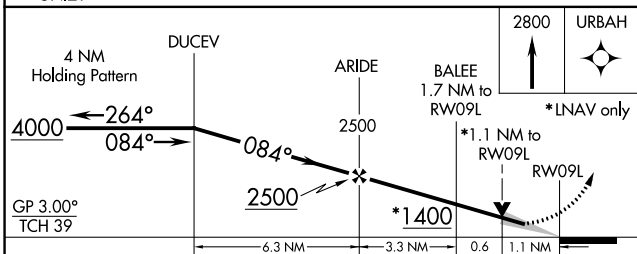
ATIS 119.4	GRAND FORKS APP CON 118.1 318.1	GRAND FORKS TOWER* 118.4(CTAF) 0 350.35	GND CON 124.575	CLNC DEL 135.725	UNICOM 122.95
----------------------	-------------------------------------------	---------------------------------------------------	---------------------------	----------------------------	-------------------------

Procedure NA for arrivals at GFK VOR/DME via V55 northeast bound.



NC-1, 25 APR 2019 to 23 MAY 2019

NC-1, 25 APR 2019 to 23 MAY 2019



CATEGORY	A	B	C	D
LPV DA	1093-1 250 (300-1)			
LNAV/VNAV DA	1238-1½ 395 (400-1½)			
LNAV MDA	1220-1 377 (400-1)			1220-1¼ 377 (400-1¼)
CIRCLING	1280-1 435 (500-1)	1300-1 455 (500-1)	1300-1½ 455 (500-1½)	1400-2 555 (600-2)

MIRL Rwy 9L-27R
MIRL Rwys 9R-27L and 17L-35R
HIRL Rwy 17R-35L
REIL Rwys 17R and 27R