

VOR/DME GFK <b>114.3</b> Chan 90	APP CRS <b>183°</b>	Rwy Idg TDZE <b>843</b> Apt Elev <b>845</b>
--	------------------------	---

# VOR RWY 17R

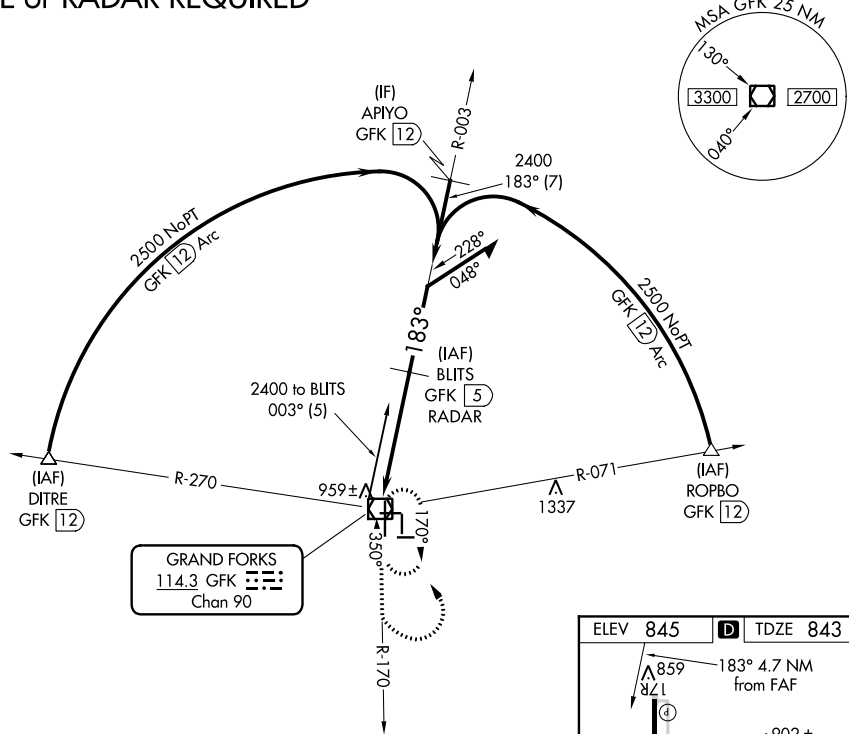
GRAND FORKS INTL (GFK)

**▼** If local altimeter setting not received, use Crookston altimeter setting and increase all MDAs 80 feet.  
**▲** VDP NA with Crookston altimeter setting.

MISSED APPROACH: Climb to 3600 via GFK R-170 then left turn direct GFK VOR/DME and hold.

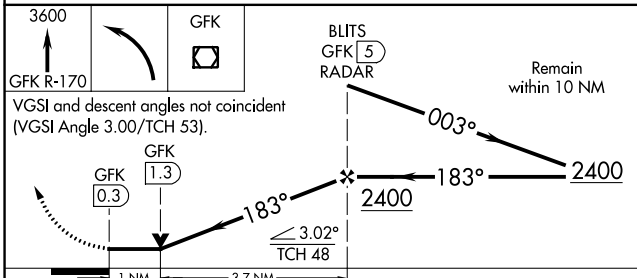
ATIS <b>119.4</b>	GRAND FORKS APP CON <b>118.1 318.1</b>	GRAND FORKS TOWER* <b>118.4(CTAF) 0 350.35</b>	GND CON <b>124.575</b>	CLNC DEL <b>135.725</b>	UNICOM <b>122.95</b>
----------------------	---	---	---------------------------	----------------------------	-------------------------

## DME or RADAR REQUIRED

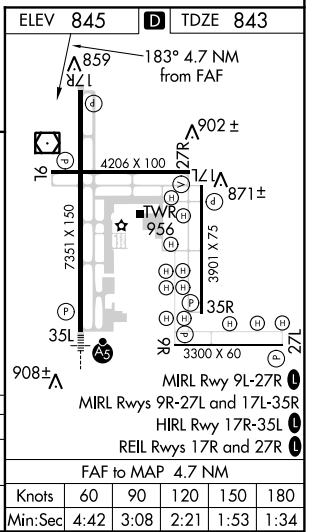


NC-1, 25 APR 2019 to 23 MAY 2019

NC-1, 25 APR 2019 to 23 MAY 2019



CATEGORY	A	B	C	D
S-17R	1220-1	377 (400-1)		1220-1 1/4 377 (400-1 1/4)
CIRCLING	1280-1 435 (500-1)	1300-1 455 (500-1)	1300-1 1/2 455 (500-1 1/2)	1400-2 555 (600-2)



Knots	60	90	120	150	180
Min:Sec	4:42	3:08	2:21	1:53	1:34