

VOR/DME GFK 114.3 Chan 90	APP CRS 344°	Rwy Idg TDZE Apt Elev	7351 845 845
--	------------------------	-----------------------------	---

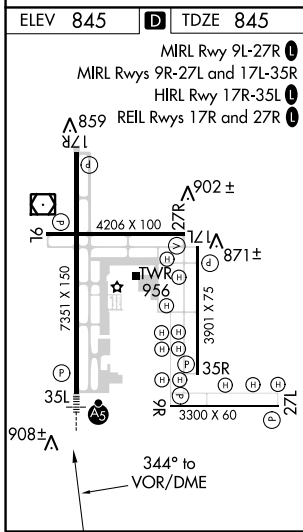
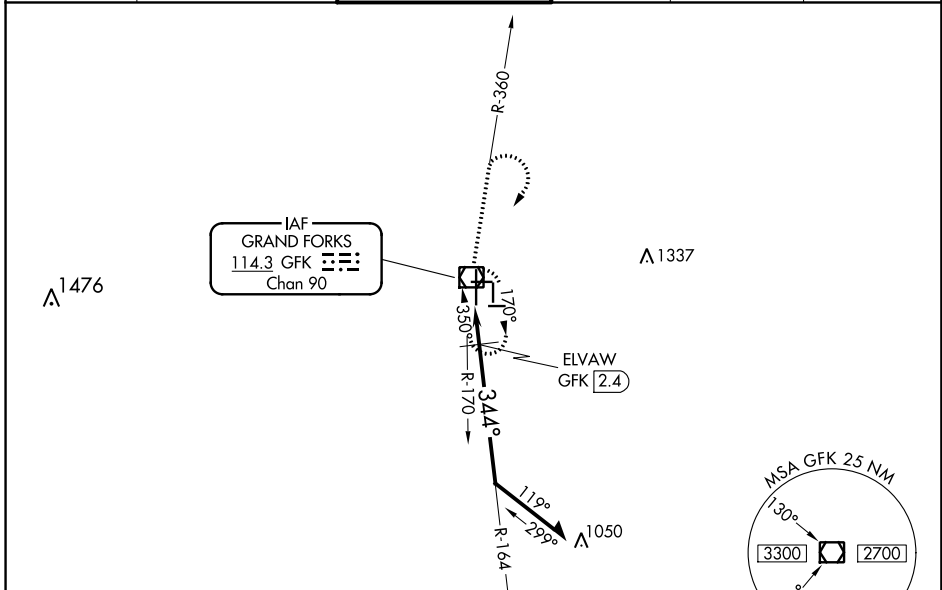
VOR RWY 35L

GRAND FORKS INTL (GFK)

⚠ When local altimeter setting not received use Crookston altimeter setting and increase all MDA 80 feet; increase S-35L Cat C/D and Circling Cat C visibility 1/4 mile, and ELVAW fix minimums S-35L Cat C/D visibility 1/2 mile. For inop MALSRL, increase S-35L Cat C/D visibility to 1 3/8 mile. For inop MALSRL, increase ELVAW fix minimums S-35L Cat C/D visibility to RVR 5500.

MALSRL MISSED APPROACH: Climb to 1300 then climb to 3600 via GFK R-360 then right turn direct GFK VOR/DME and hold.

ATIS 119.4	GRAND FORKS APP CON 118.1 318.1	GRAND FORKS TOWER* 118.4(CTAF) 350.35	GND CON 124.575	CLNC DEL 135.725	UNICOM 122.95
----------------------	---	---	---------------------------	----------------------------	-------------------------



ELEV 845	D	TDZE 845
----------	----------	----------

1300 ↑ GFK R-360 → GFK VOR/DME → 2500
 Remain within 10 NM
 ELVAW GFK 2.4
 164° 344° 2500
 3.01° TCH 55
 1360*
 1 NM 1.4 NM

VGSI and descent angles not coincident (VGSI Angle 2.76/TCH 61).
 *1440 when using Crookston altimeter setting.

CATEGORY	A	B	C	D
S-35L	1360/24	515 (600-1/2)	1360/55	515 (600-1)
CIRCLING	1360-1	515 (600-1)	1360-1 1/2 515 (600-1 1/2)	1400-2 555 (600-2)
ELVAW FIX MINIMUMS				
S-35L	1220/24	375 (400-1/2)	1220/40	375 (400-3/4)
CIRCLING	1280-1 435 (500-1)	1300-1 455 (500-1)	1300-1 1/4 455 (500-1 1/4)	1400-2 555 (600-2)

NC-1, 25 APR 2019 to 23 MAY 2019

NC-1, 25 APR 2019 to 23 MAY 2019