


ILS or LOC/DME RWY 3

GALESBURG MUNI (GBG)

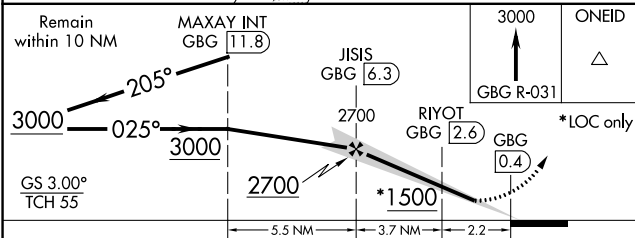
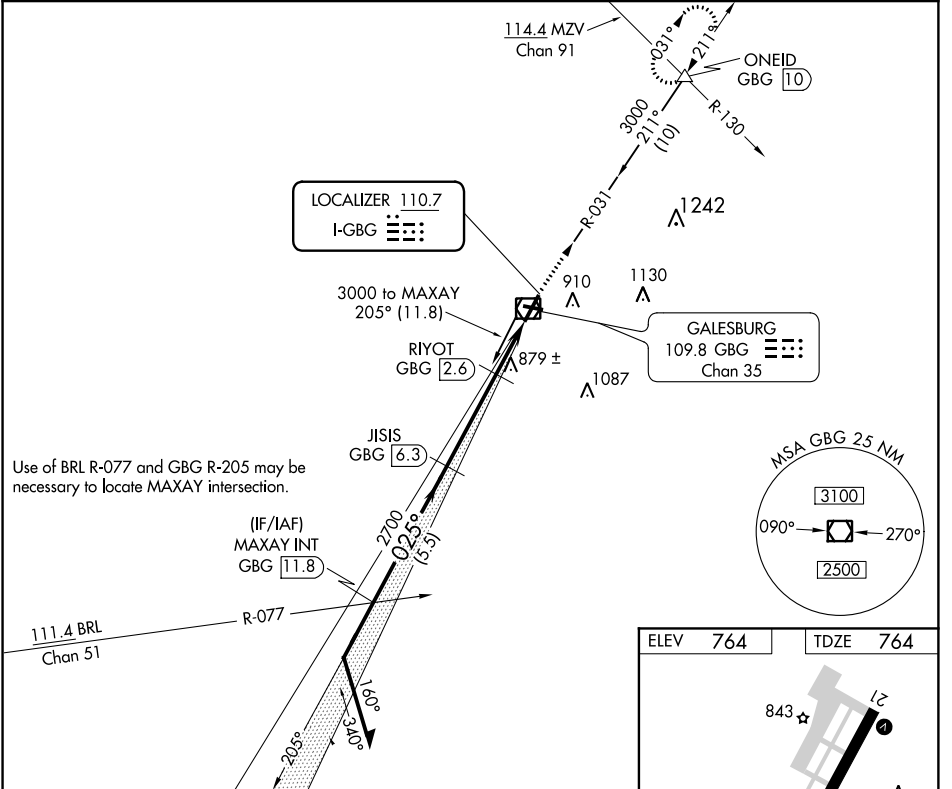
LOC I-GBG 110.7	APP CRS 025°	Rwy Idg TDZE Apt Elev	5792 764 764
---------------------------	------------------------	-----------------------------	---

▼ Circling to Rwy 10 NA at night. For inoperative MALSR, increase S-LOC 3 Cat C/D visibility to 1 $\frac{1}{8}$. For inoperative MALSR when using Macomb altimeter setting, increase S-ILS 3 all Cats visibility to $\frac{7}{8}$, increase S-LOC 3 Cat C/D visibility to 1 $\frac{1}{8}$.
▲ When local altimeter setting not received, use Macomb altimeter setting and increase all DA 71 feet, and all MDA 80 feet, increase S-LOC 3 Cat C/D to 1.

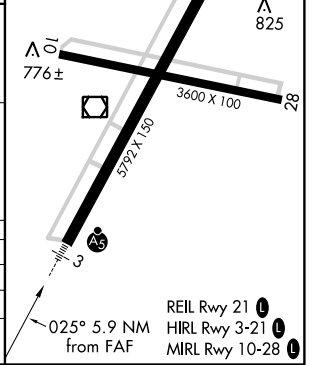
MALSR
 MALSR

MISSED APPROACH:
 Climb to 3000 on GBG VOR/DME R-031 to ONEID INT/GBG 10 DME and hold.

AWOS-3 118.975	QUAD CITY APP CON * 133.275 257.8	CLNC DEL 120.7	UNICOM 123.0 (CTAF) 0
--------------------------	---	--------------------------	---------------------------------



CATEGORY	A	B	C	D
S-ILS 3	964- $\frac{1}{2}$ 200 (200- $\frac{1}{2}$)			
S-LOC 3	1160- $\frac{1}{2}$	396 (400- $\frac{1}{2}$)	1160- $\frac{3}{4}$	396 (400- $\frac{3}{4}$)
CIRCLING	1220-1	456 (500-1)	1220- $\frac{1}{2}$	1340-2 576 (600-2)



EC-3: 25 APR 2019 to 23 MAY 2019

EC-3: 25 APR 2019 to 23 MAY 2019