

WAAS CH 50428 W21A	APP CRS 205°	Rwy Idg TDZE 764 Apt Elev 764	5792
--	------------------------	---	-------------

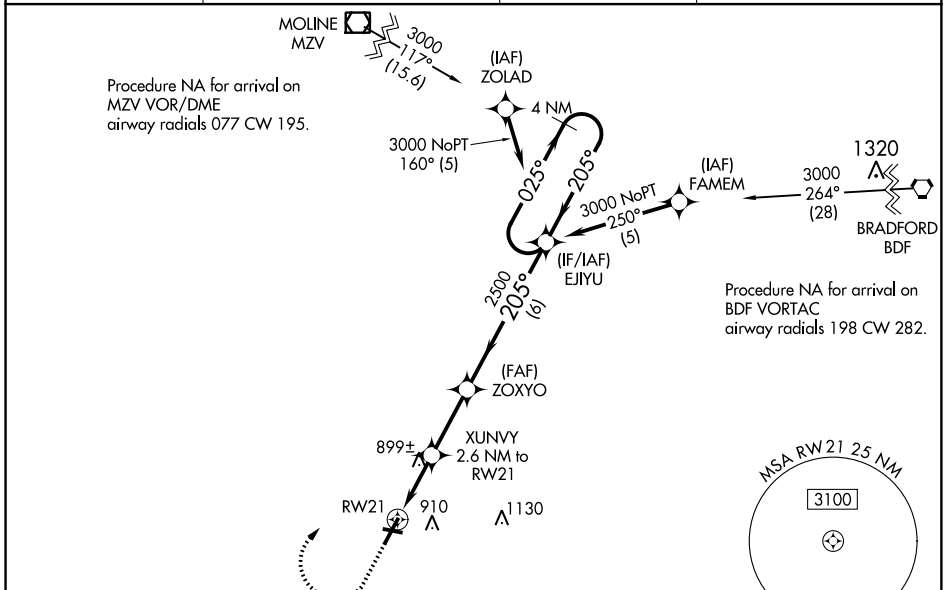
RNAV (GPS) RWY 21

GALESBURG MUNI (GBG)

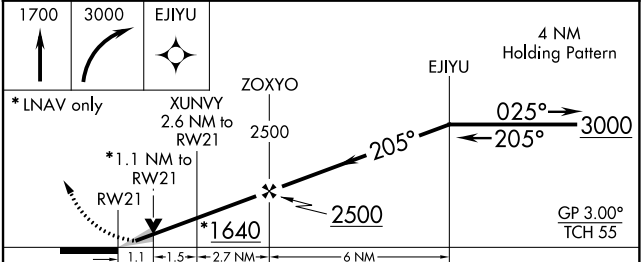
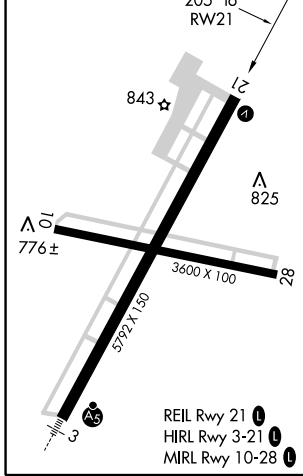
⚠ For uncompensated Baro-VNAV systems, LNAV/VNAV NA below -16°C (4°F) or above 39°C (102°F). Circling Rwy 10 NA at night. DME/DME RNP-0.3 NA. When local altimeter setting not received, use Macomb altimeter setting and increase all DA 71 feet and all MDA 80 feet, increase LPV visibility to ½ SM all Cats, increase LNAV/VNAV visibility to 1¼ SM all Cats, increase LNAV Cats C/D visibility to 1¼ SM. VDP and Baro-VNAV NA when using Macomb altimeter setting.

MISSED APPROACH: Climb to 1700 then climbing right turn to 3000 direct EJIYU and hold.

AWOS-3 118.975	QUAD CITY APP CON * 133.275 257.8	CLNC DEL 120.7	UNICOM 123.0 (CTAF) 0
--------------------------	---	--------------------------	---------------------------------



ELEV 764	TDZE 764
----------	----------



CATEGORY	A	B	C	D
LPV DA		964-¾	200 (200-¾)	
LNAV/VNAV DA		1060-7/8	296 (300-7/8)	
LNAV MDA	1160-1	396 (400-1)	1160-1½	396 (400-1½)
CIRCLING	1220-1	456 (500-1)	1220-1½	1340-2 456 (500-1½) 576 (600-2)

EC-3, 25 APR 2019 to 23 MAY 2019

EC-3, 25 APR 2019 to 23 MAY 2019