

WAAS CH 93629 W03A	APP CRS 025°	Rwy Idg TDZE Apt Elev	5792 764 764
--	------------------------	-----------------------------	---

RNAV (GPS) RWY 3

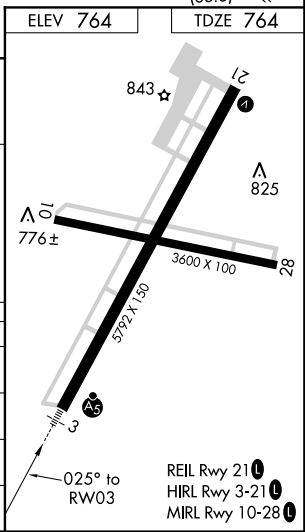
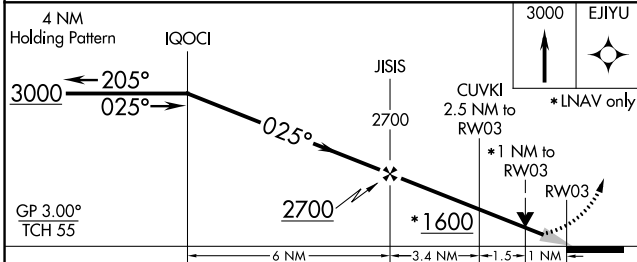
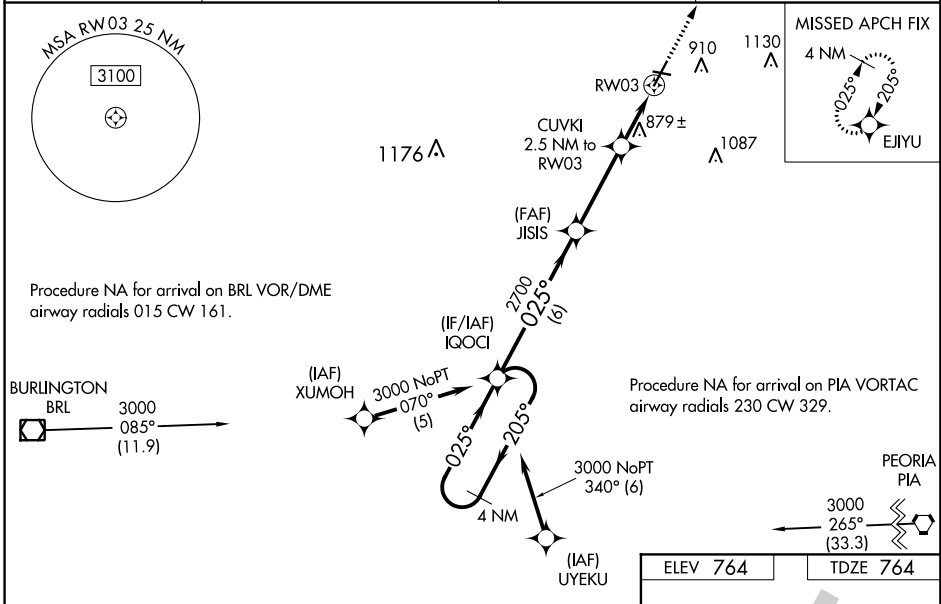
GALESBURG MUNI (GBG)

⚠ DME/DME RNP-0.3 NA. VDP and Baro-VNAV NA when using Macomb altimeter setting. When local altimeter setting not received, use Macomb altimeter setting and increase all DA 71 feet and all MDA 80 feet, increase LNAV/VNAV visibility to ¾ all Cats, increase LNAV Cat C/D visibility to 1. For uncompensated Baro-VNAV systems, LNAV/VNAV NA below -16°C (4°F) or above 39°C (102°F). Circling to Rwy 10 NA at night. For inoperative MALSR, increase LNAV/VNAV visibility to 7/8 all Cats. For inoperative MALSR when using Macomb altimeter setting, increase LPV visibility to 7/8 all Cats, increase LNAV Cats C/D visibility to 1 3/8.

MALSR
A5

MISSED APPROACH:
Climb to 3000 direct EJIYU and hold.

AWOS-3 118.975	QUAD CITY APP CON * 133.275 257.8	CLNC DEL 120.7	UNICOM 123.0 (CTAF)
--------------------------	---	--------------------------	-------------------------------



CATEGORY	A	B	C	D
LPV DA		964-1/2	200 (200-1/2)	
LNAV/VNAV DA		1060-1/2	296 (300-1/2)	
LNAV MDA	1140-1/2	376 (400-1/2)	1140-5/8	376 (400-5/8)
CIRCLING	1220-1	456 (500-1)	1220-1 1/2	1340-2
			456 (500-1 1/2)	576 (600-2)

EC-3, 25 APR 2019 to 23 MAY 2019

EC-3, 25 APR 2019 to 23 MAY 2019