

VOR/DME GBG 109.8 Chan 35	APP CRS 211°	Rwy Idg TDZE Apt Elev	5792 764 764
--	------------------------	-----------------------------	---

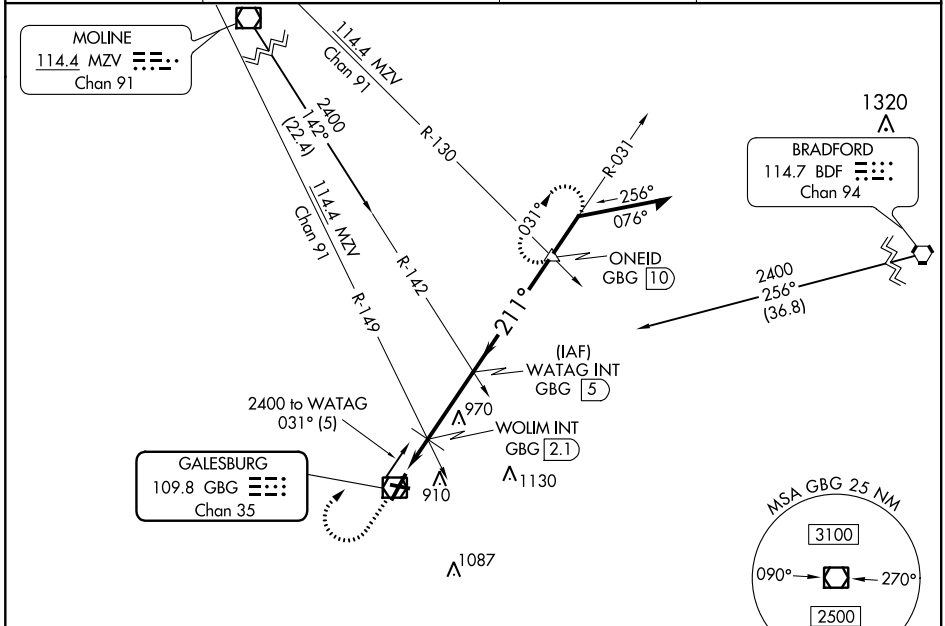
VOR RWY 21

GALESBURG MUNI (GBG)

⚠ Circling Rwy 10 NA at night. When local altimeter setting not received, use Macomb altimeter setting and increase all MDA 80 feet, increase S-21 Cats C/D and Circling Cat C visibility to 1 1/8 SM, increase WOLIM fix minimums S-21 Cats C/D visibility to 1 1/2 SM.

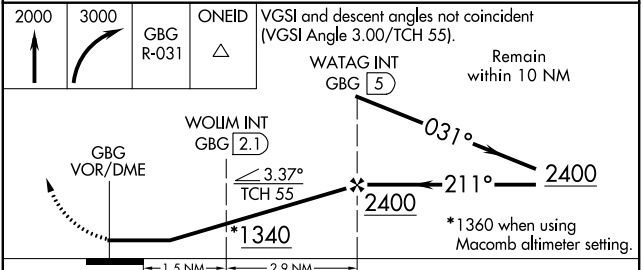
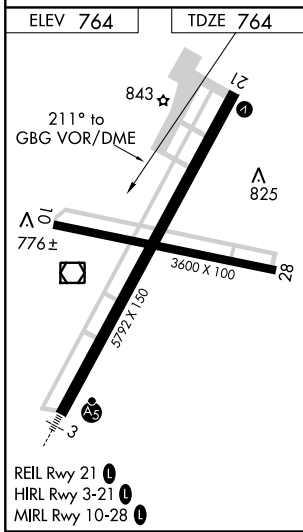
⚠ MISSED APPROACH: Climb to 2000 then climbing right turn to 3000 on GBG VOR/DME R-031 to ONEID INT/GBG 10 DME and hold.

AWOS-3 118.975	QUAD CITY APP CON ★ 133.275 257.8	CLNC DEL 120.7	UNICOM 123.0 (CTAF) 0
--------------------------	---	--------------------------	---------------------------------



EC-3, 25 APR 2019 to 23 MAY 2019

EC-3, 25 APR 2019 to 23 MAY 2019



CATEGORY	A	B	C	D
S-21	1340-1	576 (600-1)	1340-1 1/8	576 (600-1 1/8)
CIRCLING	1340-1	576 (600-1)	1340-1 5/8	1340-2
			576 (600-1 1/8)	576 (600-2)
WOLIM FIX MINIMUMS (DUAL VOR RECEIVERS OR DME REQUIRED)				
S-21	1220-1	456 (500-1)	1220-1 3/8	456 (500-1 3/8)
CIRCLING	1220-1	456 (500-1)	1220-1 1/2	1340-2
			456 (500-1 1/2)	576 (600-2)