

WAAS CH 93608 W03A	APP CRS 038°	Rwy Idg TDZE 1450 Apt Elev 1470	4314
--	------------------------	---	-------------

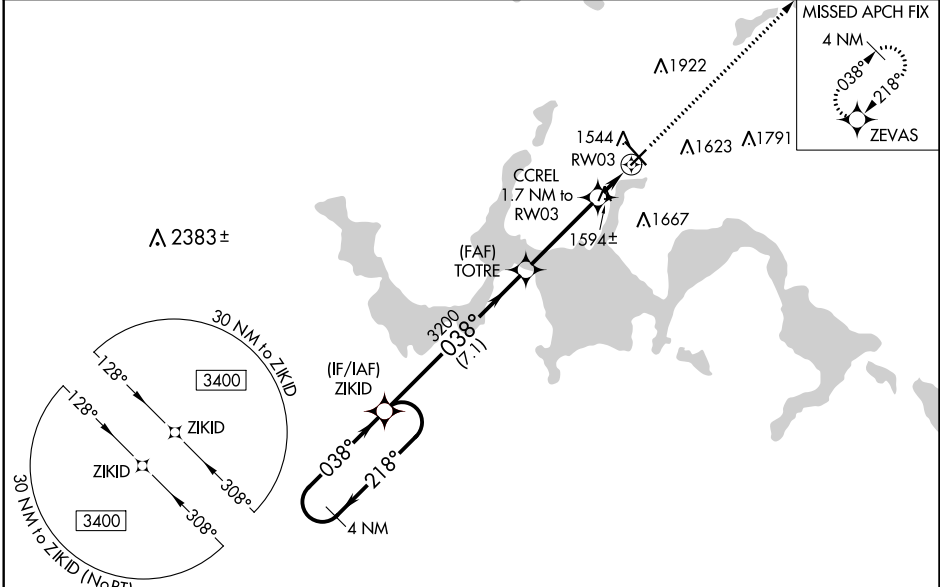
RNAV (GPS) RWY 3

DEVILS LAKE RGNL (DVL)

⚠ For uncompensated Baro-VNAV systems, LNAV/VNAV NA below -17°C (2°F) or above 54°C (130°F). DME/DME RNP-0.3 NA. When local altimeter setting not received, use Cando altimeter setting and increase all DA 63 feet, and all MDA 80 feet, increase LNAV/VNAV all Cats visibility 1/8 mile, LNAV and Circling Cat C and D visibility 1/4 mile. Helicopter visibility reduction below 3/4 SM NA. Baro-VNAV NA when using Cando altimeter setting.

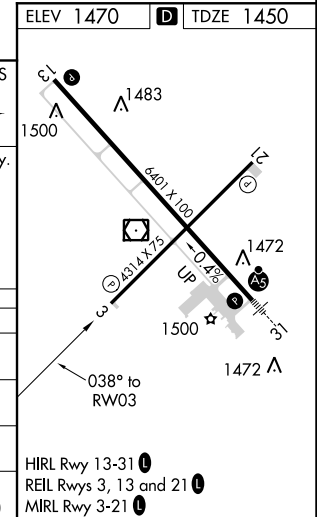
MISSED APPROACH: Climb to 3400 direct ZEVAS and hold.

AWOS-3PT 125.875	MINNEAPOLIS CENTER 124.2 270.3	GRAND FORKS RADIO 122.3	UNICOM 122.8 (CTAF) 📻
----------------------------	--	-----------------------------------	--



VGSI and RNAV glidepath not coincident (VGSI Angle 3.00/TCH 25).

4 NM Holding Pattern	ZIKID	TOTRE	CCREL 1.7 NM to RWY 3	ZEVAS
3400 ← 218°	3400 → 038°	3200	*2040	3400 ↑
GP 3.00°				*RNAV only.
TCH 50				
	7.1 NM	3.6 NM	1.7 NM	
CATEGORY	A	B	C	D
LPV DA	1700-1		250 (300-1)	
LNAV/VNAV DA	1714-1		264 (300-1)	
LNAV MDA	1860-1 410 (400-1)		1860-1 1/8 410 (400-1 1/8)	
📻 CIRCLING	2000-1 530 (600-1)		2240-2 1/4 770 (800-2 1/4) 2240-2 1/2 770 (800-2 1/2)	



NC-1, 25 APR 2019 to 23 MAY 2019

NC-1, 25 APR 2019 to 23 MAY 2019