

SDF DUS <b>109.9</b>	APP CRS <b>339°</b>	Rwy Idg 5002
		TDZE 1258
		Apt Elev 1278

**SDF RWY 34**  
MARSHFIELD MUNI (MFI)

**NA** ADF Required. When local altimeter setting not received, use Central Wisconsin altimeter setting and increase all MDA 60 feet. Inop table does not apply to Cats A/B. Inop table does not apply to Cat A/B when using Central Wisconsin altimeter setting.



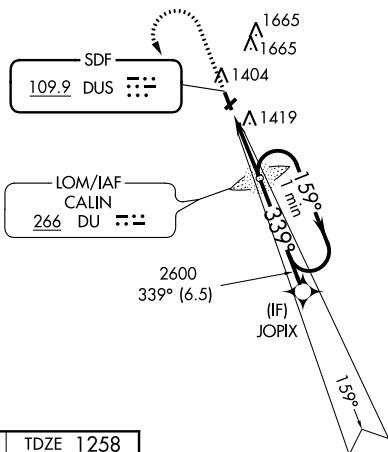
**MISSED APPROACH:** Climb to 3000 then left turn direct CALIN LOM and hold.

ASOS  
**121.575**

MINNEAPOLIS CENTER  
**124.4 317.7**

UNICOM  
**123.0 (CTAF)**

**RNAV 1-GPS REQUIRED**

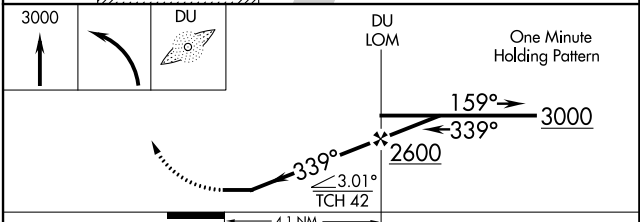


EC-3, 25 APR 2019 to 23 MAY 2019

EC-3, 25 APR 2019 to 23 MAY 2019

ELEV 1278	TDZE 1258
REIL Rwy 16 (1)	
MIRL Rwys 5-23 and 16-34 (1)	

FAF to MAP 4.1 NM					
Knots	60	90	120	150	180
Min:Sec	4:06	2:44	2:03	1:38	1:22



CATEGORY	A	B	C	D
S-34	1640-1		382 (400-1)	
<b>C</b> CIRCLING	1760-1	482 (500-1)	2020-2¼ 742 (800-2¼)	2020-2½ 742 (800-2½)