

WAAS CH <b>78026</b> <b>W23A</b>	APP CRS <b>230°</b>	Rwy Idg TDZE <b>3443</b> Apt Elev <b>3443</b>
--	------------------------	---

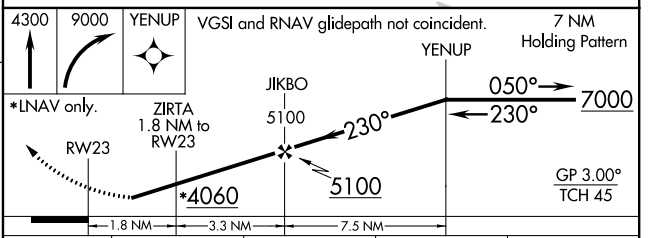
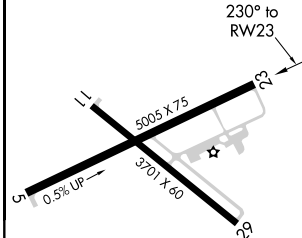
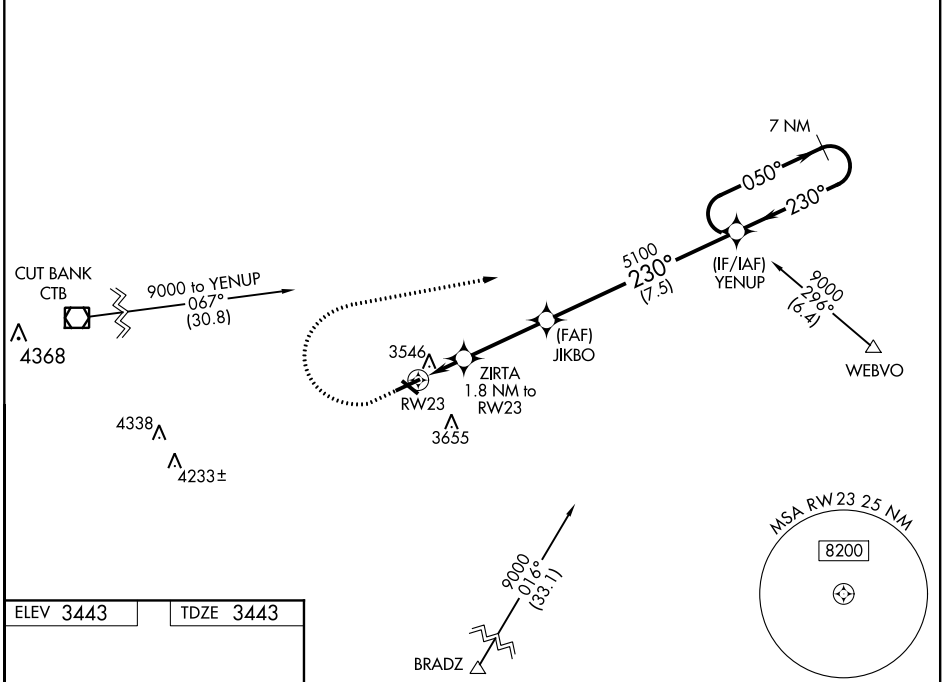
# RNAV (GPS) RWY 23

SHELBY (SBX)

**Baro-VNAV NA.** Rwy 23 helicopter visibility reduction below 1 SM NA. DME/DME RNP-0.3 NA. Use Cut Bank altimeter setting, if not received use Great Falls altimeter setting and increase all DA 81 feet and all MDA 100 feet; increase LPV all Cats visibility 3/8 mile, LNAV/VNAV all Cats, LNAV Cats C/D, Circling Cats C/D visibilities 1/4 mile. Straight-in Rwy 23 NA at night.

**MISSED APPROACH:** Climb to 4300 then climbing right turn to 9000 direct YENUP and hold, continue climb-in-hold to 9000.

CUT BANK ASOS <b>119.025</b>	SALT LAKE CITY CENTER <b>133.4 285.4</b>	UNICOM <b>122.8 (CTAF) 0</b>
---------------------------------	---	---------------------------------



CATEGORY	A	B	C	D
LPV DA		3799-1 1/8	356 (400-1 1/8)	
LNAV/VNAV DA		3813-1 1/4	370 (400-1 1/4)	
LNAV MDA	3920-1	477 (500-1)	3920-1 3/8	477 (500-1 3/8)
<b>C</b> CIRCLING	4020-1 577 (600-1)	4080-1 637 (700-1)	4100-1 3/4 657 (700-1 3/4)	4220-2 1/2 777 (800-2 1/2)

NW-1, 25 APR 2019 to 23 MAY 2019

NW-1, 25 APR 2019 to 23 MAY 2019