

WAAS CH 69630 W05A	APP CRS 050°	Rwy Idg TDZE Apt Elev	5005 3427 3443
--	------------------------	-----------------------------	---

RNAV (GPS) RWY 5

SHELBY (SBX)

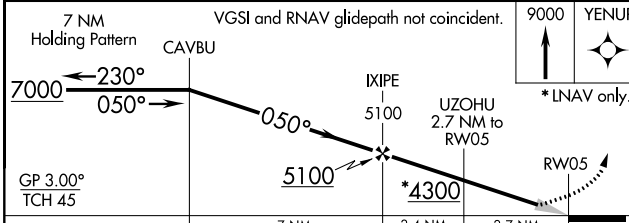
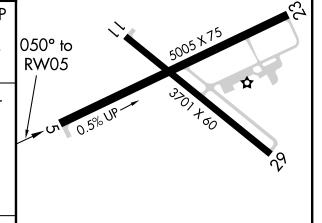
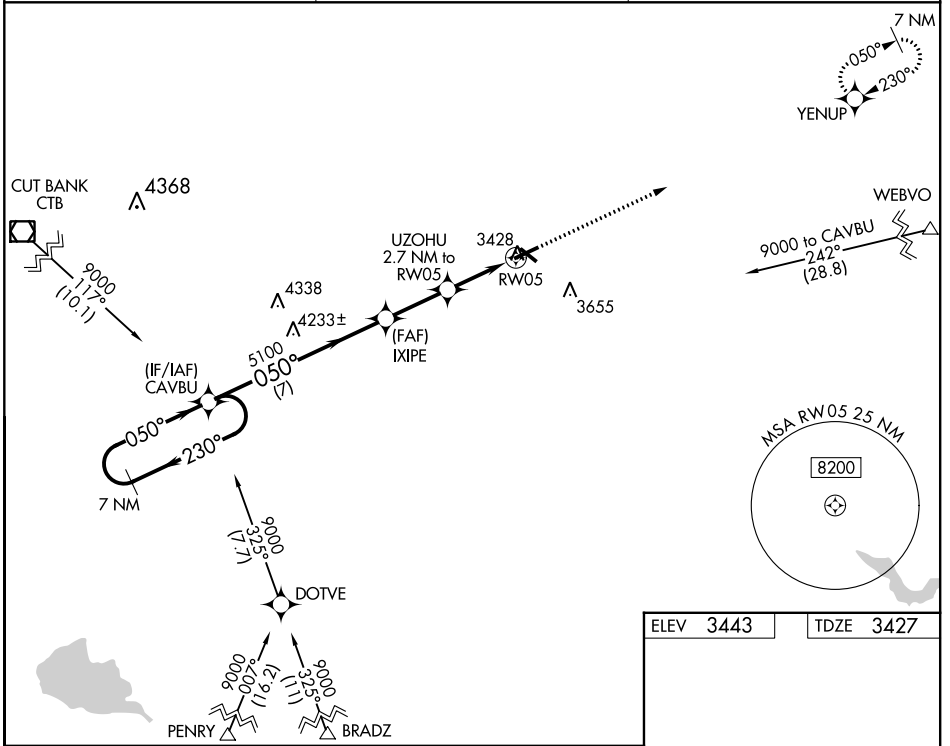
▼ Night landing: Rwy 23 NA. Baro-VNAV NA. DME/DME RNP-0.3 NA. Use Cut Bank altimeter setting, if not received use Great Falls altimeter setting and increase all DA 81 feet and all MDA 100 feet; increase LPV all Cats visibility ¼ mile, LNAV/VNAV all Cats visibility ⅓ mile, LNAV Cats C/D and Circling Cat C/D visibilities ¼ mile.

MISSED APPROACH: Climb to 9000 direct YENUP and hold, continue climb-in-hold to 9000.

CUT BANK ASOS
119.025

SALT LAKE CITY CENTER
133.4 285.4

UNICOM
122.8 (CTAF)



CATEGORY	A	B	C	D
LPV DA		3733-1	306 (300-1)	
LNAV/VNAV DA		3783-1½	356 (400-1½)	
LNAV MDA	3800-1	373 (400-1)	3800-1½	373 (400-1½)
Ⓢ CIRCLING	4020-1 577 (600-1)	4080-1 637 (700-1)	4100-1¾ 657 (700-1¾)	4220-2½ 777 (800-2½)

ELEV 3443 | TDZE 3427

MIRL Rwy 5-23 and 11-29

NW-1, 25 APR 2019 to 23 MAY 2019

NW-1, 25 APR 2019 to 23 MAY 2019