

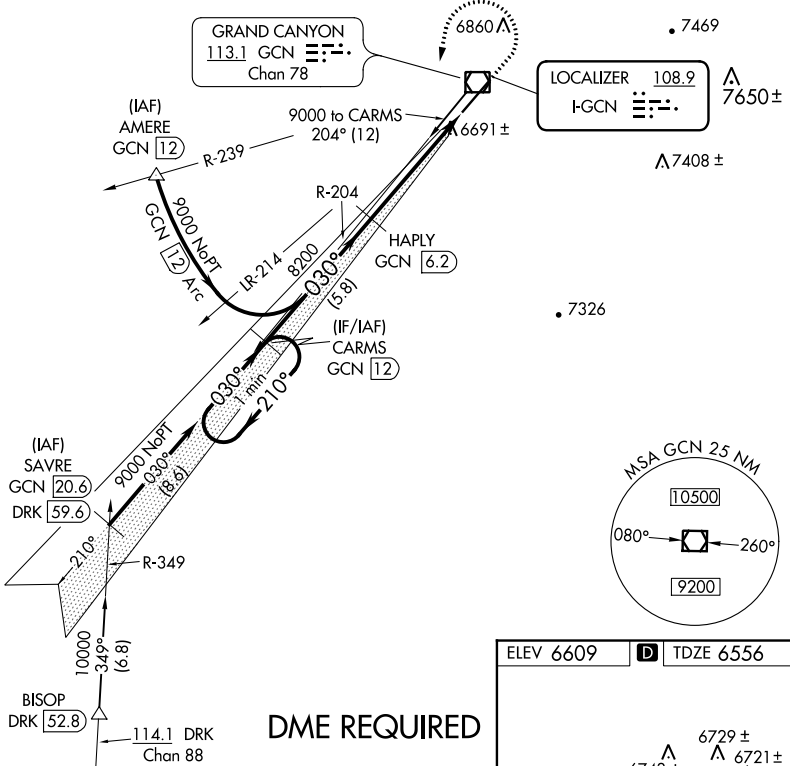
LOC I-GCN 108.9	APP CRS 030°	Rwy Idg 8999
		TDZE 6556
		Apt Elev 6609

ILS or LOC RWY 3

GRAND CANYON NATIONAL PARK (GCN)

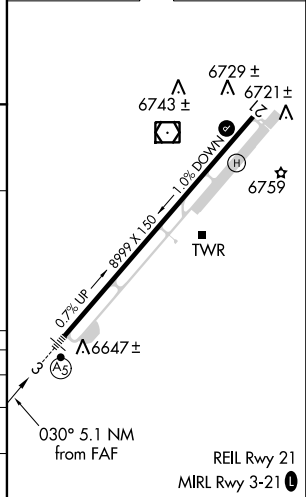
▽ DME from GCN VOR/DME. Simultaneous reception of I-GCN and GCN DME required. DME required.	MALSR 	MISSED APPROACH: Climb to 7000 then climbing left turn to 9000 on heading 180° and on GCN VOR/DME R-204 direct CARMS/GCN 12 DME and hold.
--	------------------	--

ATIS 124.3	LOS ANGELES CENTER 124.85 319.2	CANYON TOWER* 119.0 (CTAF) 0	GND CON 121.9	UNICOM 122.95
----------------------	---	--	-------------------------	-------------------------



ELEV 6609	D TDZE 6556
-----------	--------------------

One Minute Holding Pattern	CARMS GCN 12	HAPLY GCN 6.2	7000	9000	GCN R-204	CARMS GCN 12		
	9000	210°	030°	030°	8200	5.8 NM	3.9 NM	1.2 NM
GS 3.00° TCH 58	*GCN 2.3							*LOC only.
	GCN 1.2							
CATEGORY	A	B	C	D				
S-ILS 3	6795-3/4		239 (200-3/4)					
S-LOC 3	6960-1	404 (400-1)	6960-1 1/8		404 (400-1 1/8)			
C CIRCLING	7140-1 531 (600-1)	7200-1 591 (600-1)	7280-2 671 (700-2)	7620-3 1011 (1100-3)				



SW-4, 25 APR 2019 to 23 MAY 2019

SW-4, 25 APR 2019 to 23 MAY 2019