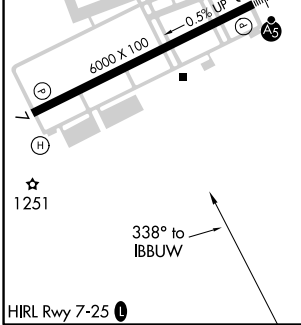
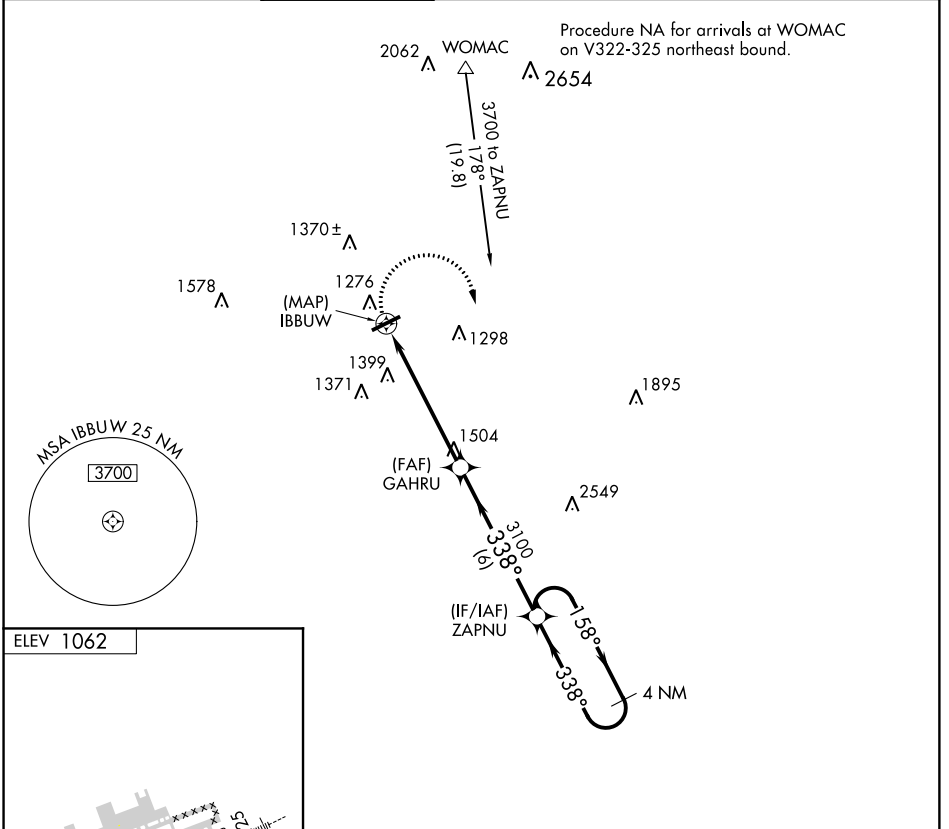


APP CRS 338°	Rwy Idg TDZE Apt Elev	N/A N/A 1062
------------------------	-----------------------------	---

RNAV (GPS)-A

GWINNETT COUNTY-BRISCOE FIELD (LZU)

<p>▼ DME/DME RNP-0.3 NA. When local altimeter setting not received, use Winder altimeter setting and increase all MDAs 60 feet; increase Cat C and D visibility ¼ mile.</p> <p>▲ MISSED APPROACH: Climbing right turn to 3600 direct ZAPNU and hold.</p>				<p>ATIS 132.275</p>		<p>ATLANTA APP CON 126.975 239.275</p>		<p>GWINNETT TOWER ★ 124.1 (CTAF) 0</p>		<p>GND CON 121.8</p>		<p>CLNC DEL 121.8</p>		<p>ATLANTA CLNC DEL 134.0 (When tower closed)</p>		<p>UNICOM 123.05</p>	
--	--	--	--	--------------------------------	--	---	--	---	--	---------------------------------	--	----------------------------------	--	--	--	---------------------------------	--



3600	ZAPNU	4 NM Holding Pattern			
		GAHRU	ZAPNU	158°	3600
		IBBUW	3100	338°	3600
<p>5.8 NM</p>		<p>6 NM</p>			
CATEGORY	A	B	C	D	
CIRCLING	1640-1	578 (600-1)	1640-1½ 578 (600-1½)	1700-2 638 (700-2)	

RNAV (GPS)-A

SE-4, 25 APR 2019 to 23 MAY 2019

SE-4, 25 APR 2019 to 23 MAY 2019