

WAAS CH <b>58307</b> <b>W16A</b>	APP CRS <b>161°</b>	Rwy ldg <b>4002</b> TDZE <b>168</b> Apt Elev <b>168</b>
--	------------------------	---

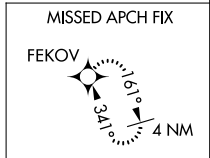
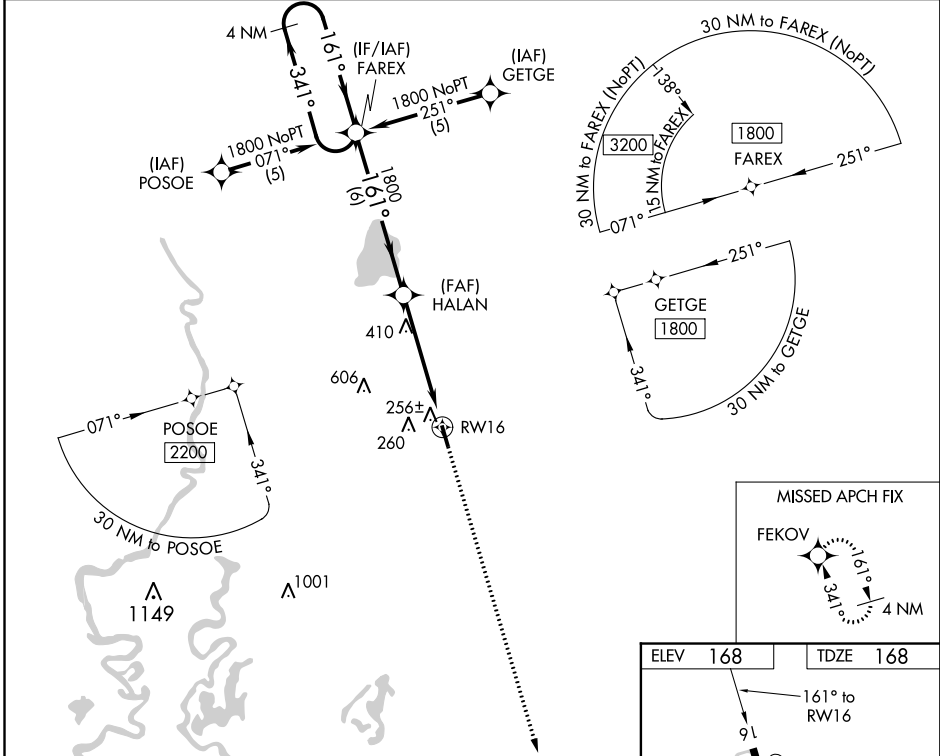
# RNAV (GPS) RWY 16

MOREHOUSE MEMORIAL (BQP)

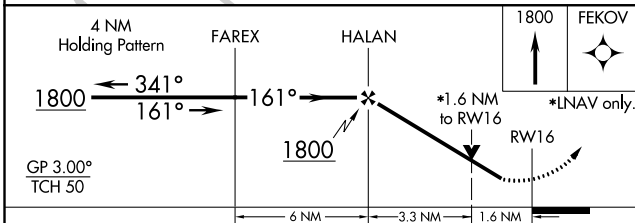
**⚠** For uncompensated Baro-VNAV systems, LNAV/VNAV NA below -15°C (5°F) or above 54°C (130°F). DME/DME RNP-0.3 NA. Visibility reduction by helicopters NA. When local altimeter setting not received, use Monroe altimeter setting and increase all DA/MDA 60 feet and all visibilities ¼ mile. Baro-VNAV NA when using Monroe altimeter setting. VDP NA when using Monroe altimeter setting.

**MISSED APPROACH:**  
Climb to 1800 direct FEKOV and hold.

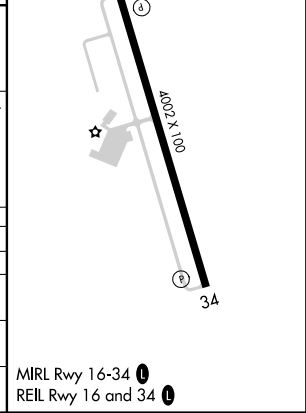
AWOS-3PT <b>118.375</b>	MONROE APP CON * <b>126.9 307.9</b>	GCO <b>135.075</b>	UNICOM <b>122.8 (CTAF) 0</b>
----------------------------	--	-----------------------	---------------------------------



ELEV <b>168</b>	TDZE <b>168</b>
-----------------	-----------------



CATEGORY	A	B	C	D
LPV DA	499-1¼	331 (400-1¼)		NA
LNAV/VNAV DA	526-1¼	358 (400-1¼)		NA
LNAV MDA	720-1	552 (600-1)	720-1½ 552 (600-1½)	NA
CIRCLING	720-1	552 (600-1)	780-1¾ 612 (700-1¾)	NA



SC-4, 25 APR 2019 to 23 MAY 2019

SC-4, 25 APR 2019 to 23 MAY 2019