

RNAV (GPS) RWY 26R

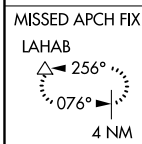
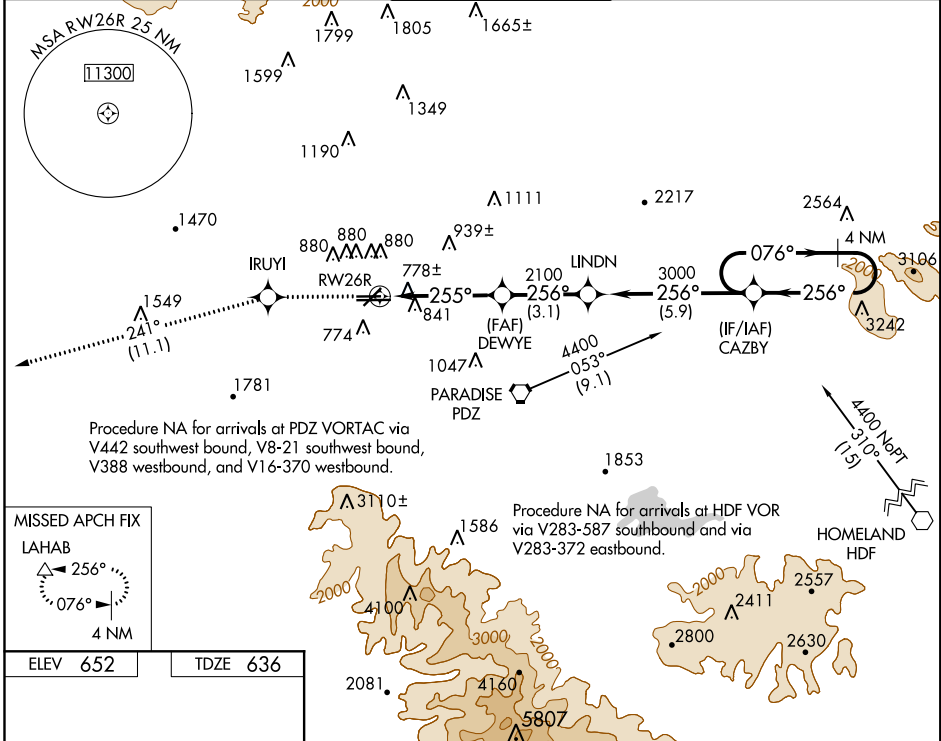
CHINO (CNO)

WAAS CH 97320 W26A	APP CRS 255°	Rwy Idg TDZE Apt Elev	4858 636 652
--	------------------------	-----------------------------	---

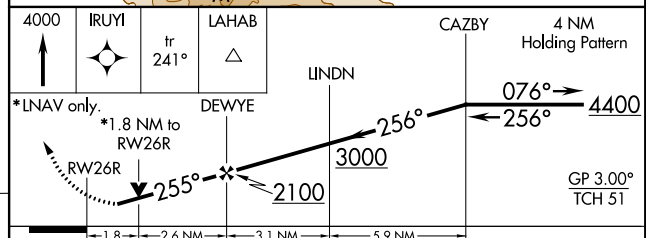
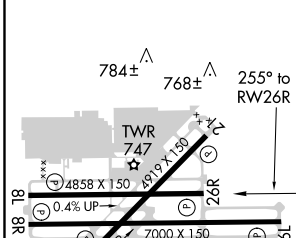
For uncompensated Baro-VNAV systems, LNAV/VNAV NA below -16°C (4°F) or above 47°C (116°F). DME/DME RNP-0.3 NA. Helicopter visibility reduction below 3/4 SM not authorized.

MISSED APPROACH: Climb to 4000 direct IRUYI and via 241° track to LAHAB and hold.

ATIS 125.85	SOCAL APP CON 135.4 318.2	CHINO TOWER * 118.5 (CTAF)	GND CON 121.6	UNICOM 122.95
-----------------------	-------------------------------------	--------------------------------------	-------------------------	-------------------------



ELEV 652	TDZE 636
----------	----------



REIL Rwy 3 and 21	MIRL Rwy 3-21 and 8R-26L	HIRL Rwy 8L-26R
-------------------	--------------------------	-----------------

CATEGORY	A	B	C	D
LPV DA		1030-1¼	394 (400-1¼)	
LNAV/VNAV DA		1177-2	541 (600-2)	
LNAV MDA	1260-1	624 (700-1)	1260-1¾ 624 (700-1¾)	1260-2 624 (700-2)
CIRCLING		1260-1¾	608 (700-1¾)	1260-2 608 (700-2)

SW-3, 25 APR 2019 to 23 MAY 2019

SW-3, 25 APR 2019 to 23 MAY 2019