

# VOR RWY 26R

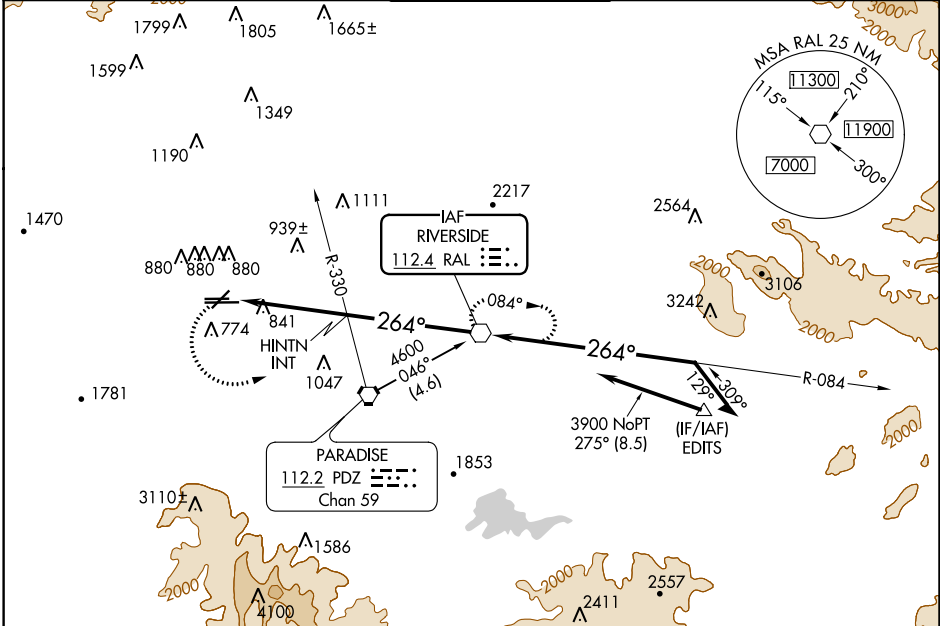
CHINO (CNO)

VOR RAL <b>112.4</b>	APP CRS <b>264°</b>	Rwy Idg <b>4858</b>
		TDZE <b>636</b>
		Apt Elev <b>650</b>

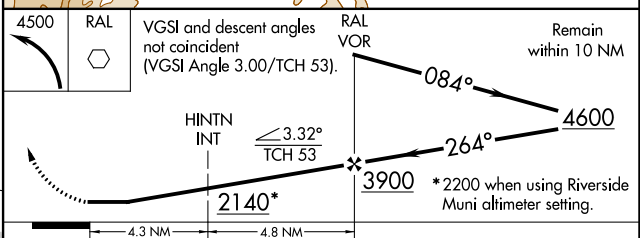
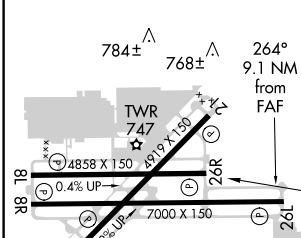
**NA** Visibility reduction by helicopters NA.  
When local altimeter setting not received, use Riverside Muni altimeter setting and increase all MDA 60 feet, increase HINTN FIX minimums S-26R and circling Cat B, C, and D visibility 1/4 mile.

**MISSED APPROACH:** Climbing left turn to 4500 direct RAL VOR and hold, continue climb-in-hold to 4500.

ATIS <b>125.85</b>	SOCAL APP CON <b>135.4 318.2</b>	CHINO TOWER ★ <b>118.5 (CTAF)</b>	GND CON <b>121.6</b>	UNICOM <b>122.95</b>
-----------------------	-------------------------------------	--------------------------------------	-------------------------	-------------------------



ELEV 650	TDZE 636
----------	----------



CATEGORY	A	B	C	D
S-26R	2140-1¼ 1504 (1500-1¼)	2140-1½ 1504 (1500-1½)	2140-3	1504 (1500-3)
CIRCLING	2140-1¼ 1490 (1500-1¼)	2140-1½ 1490 (1500-1½)	2140-3	1490 (1500-3)
HINTN FIX MINIMUMS				
S-26R	1320-1	684 (700-1)	1320-2 684 (700-2)	1320-2¼ 684 (700-2¼)
CIRCLING	1320-1	670 (700-1)	1320-2 670 (700-2)	1320-2¼ 670 (700-2¼)

FAF to MAP 9.1 NM					
Knots	60	90	120	150	180
Min:Sec	9:06	6:04	4:33	3:38	3:02

SW-3, 25 APR 2019 to 23 MAY 2019

SW-3, 25 APR 2019 to 23 MAY 2019