

APP CRS <b>268°</b>	Rwy Idg <b>2998</b>
	TDZE <b>260</b>
	Apt Elev <b>260</b>

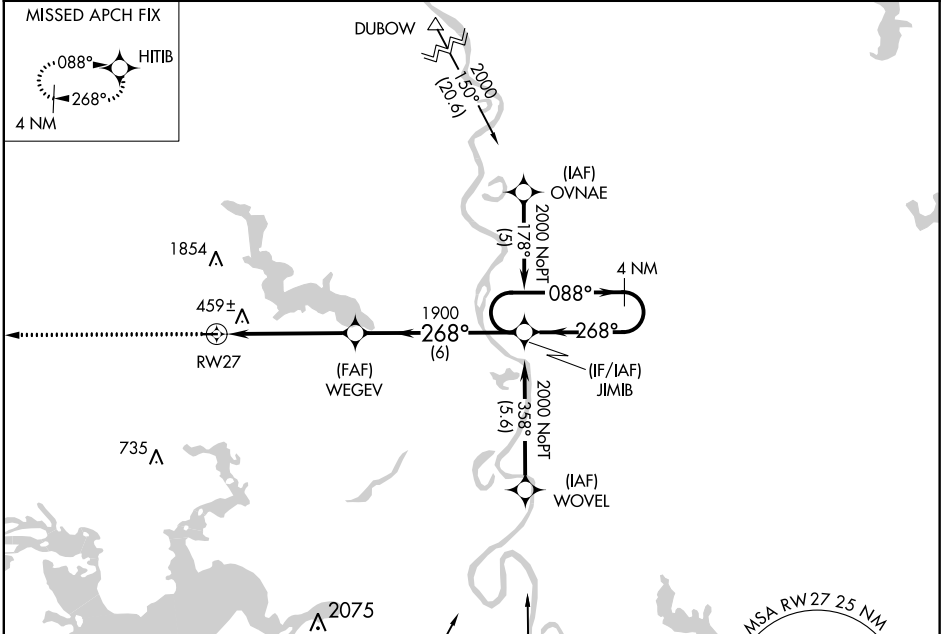
# RNAV (GPS) RWY 27

VIVIAN (3F4)

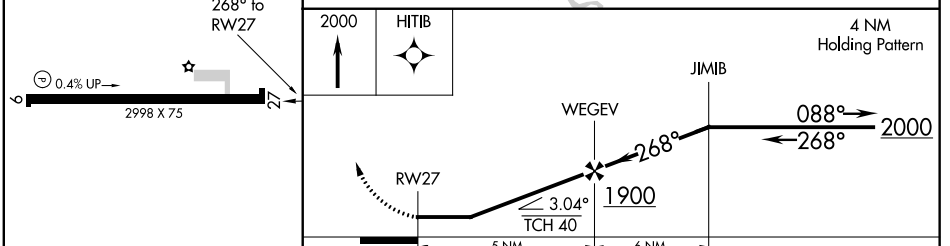
**⚠** Circling NA north of Rwy 9-27. DME/DME RNP-0.3 NA. Use Shreveport Rgnl altimeter setting; when not received, use Shreveport Downtown altimeter setting.  
**⚠** NA Procedure NA at night. Helicopter visibility reduction below 1 SM NA.

**MISSED APPROACH:** Climb to 2000 direct HITIB and hold.

SHREVEPORT APP CON <b>119.9 335.55</b>	UNICOM <b>122.8 (CTAF) 0</b>	GCO <b>135.075</b>
---	---------------------------------	-----------------------



ELEV 260	TDZE 260
----------	----------



CATEGORY	A	B	C	D
LNAV MDA	860-1	600 (600-1)	860-1½ 600 (600-1½)	NA
CIRCLING	860-1	600 (600-1)	880-1¾ 620 (700-1¾)	NA

SC-4, 25 APR 2019 to 23 MAY 2019

SC-4, 25 APR 2019 to 23 MAY 2019