

WAAS CH 49104 W25A	APP CRS 250°	Rwy Idg TDZE Apt Elev	5100 1311 1318
--	------------------------	-----------------------------	---

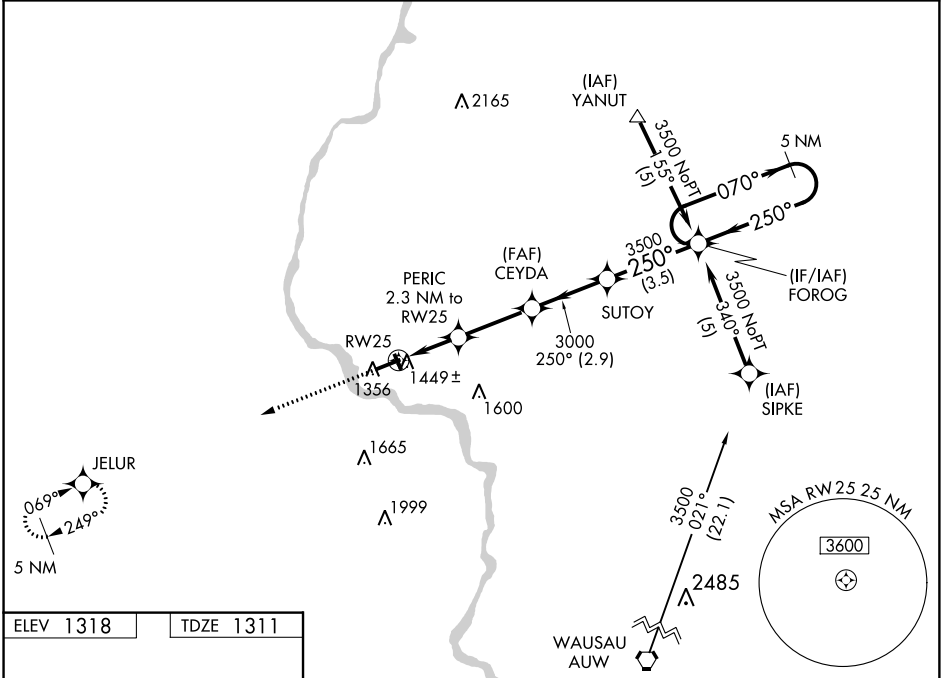
RNAV (GPS) RWY 25

MERRILL MUNI (R.R.L.)

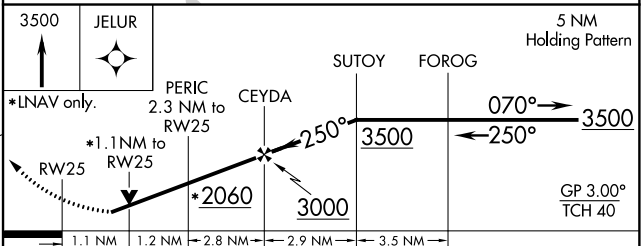
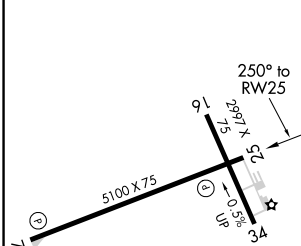
◀ Circling to Rwy 16-34 NA at night. Baro-VNAV NA when using Wausau altimeter setting. For uncompensated Baro-VNAV systems, LNAV/VNAV NA below -17°C (2°F) or above 54°C (130°F). DME/DME RNP-0.3 NA. Visibility reduction by helicopters NA. VDP NA when using Wausau altimeter setting. If local altimeter setting not received, use Wausau altimeter setting, increase all DAs 55 feet; increase all MDAs 60 feet.

MISSED APPROACH:
Climb to 3500 direct
JELUR and hold.

AWOS-3 119.925	MINNEAPOLIS CENTER 124.4 317.7	GCO 121.725	UNICOM 122.8 (CTAF) ①
--------------------------	--	-----------------------	--



ELEV 1318	TDZE 1311
-----------	-----------



CATEGORY	A	B	C	D
LPV DA	1640-1¼	329 (400-1¼)		NA
LNAV/VNAV DA	1719-1½	408 (500-1½)		NA
LNAV MDA	1700-1	389 (400-1)		NA
CIRCLING	1760-1 442 (500-1)	1780-1 462 (500-1)	1780-1½ 462 (500-1½)	NA

REIL Rwy 7 and 25 **①**
MIRL Rwy 16-34 and 7-25 **②**

EC-3, 25 APR 2019 to 23 MAY 2019

EC-3, 25 APR 2019 to 23 MAY 2019