

WAAS CH 70604 W07A	APP CRS 069°	Rwy Idg TDZE Apt Elev	5100 1318 1318
--	------------------------	-----------------------------	---

RNAV (GPS) RWY 7

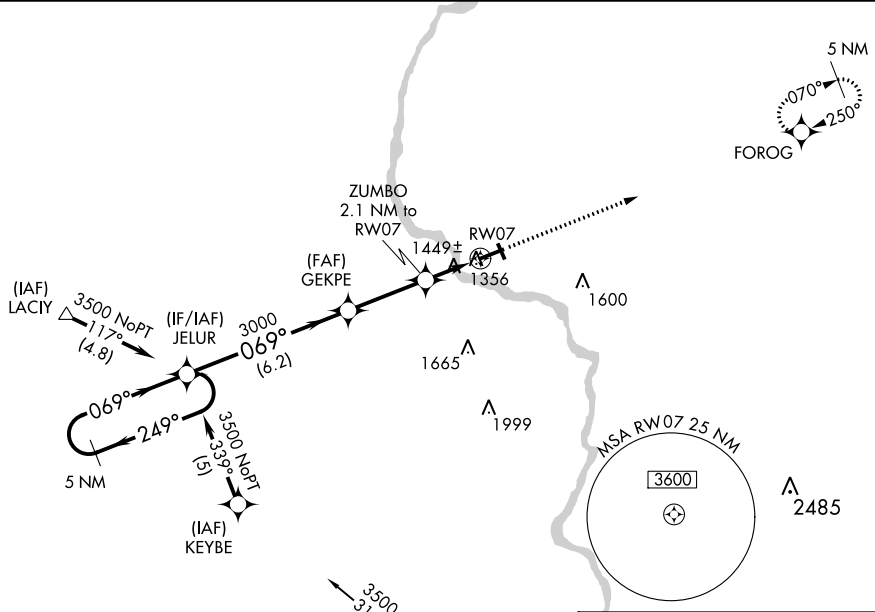
MERRILL MUNI (R.R.L)

RNP APCH.

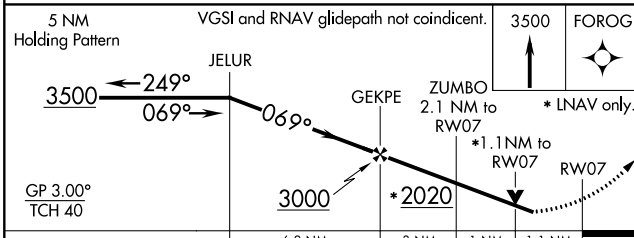
▼ Circling Rwy 16, 34 NA at night. Baro-VNAV and VDP NA when using Wausau altimeter setting. For uncompensated Baro-VNAV systems, LNAV/VNAV NA below -17°C or above 54°C. Rwy 7 helicopter visibility reduction below ¾ SM NA. When local altimeter setting not received, use Wausau altimeter setting: increase LPV DA to 1690 feet, LNAV/VNAV DA to 1809 feet and all MDAs 60 feet.

MISSED APPROACH:
Climb to 3500 direct FOROG and hold.

AWOS-3 119.925	MINNEAPOLIS CENTER 124.4 317.7	GCO 121.725	UNICOM 122.8 (CTAF) 0
--------------------------	--	-----------------------	---------------------------------



Procedure NA for arrivals at AUV
VORTAC on airway radials 271 CW 005.



CATEGORY	A	B	C	D
LPV DA	1635-1¼	317 (400-1¼)		NA
LNAV/VNAV DA	1754-1½	436 (500-1½)		NA
LNAV MDA	1700-1	382 (400-1)		NA
CIRCLING	1760-1 442 (500-1)	1780-1 462 (500-1)	1780-1½ 462 (500-1½)	NA

ELEV 1318	TDZE 1318
-----------	-----------

REIL Rwy 7 and 25 **0**
MIRL Rwy 16-34 and 7-25 **0**

EC-3, 25 APR 2019 to 23 MAY 2019

EC-3, 25 APR 2019 to 23 MAY 2019