

WAAS CH 50420 W30A	APP CRS 297°	Rwy Idg TDZE Apt Elev	3428 939 940
--	------------------------	-----------------------------	---

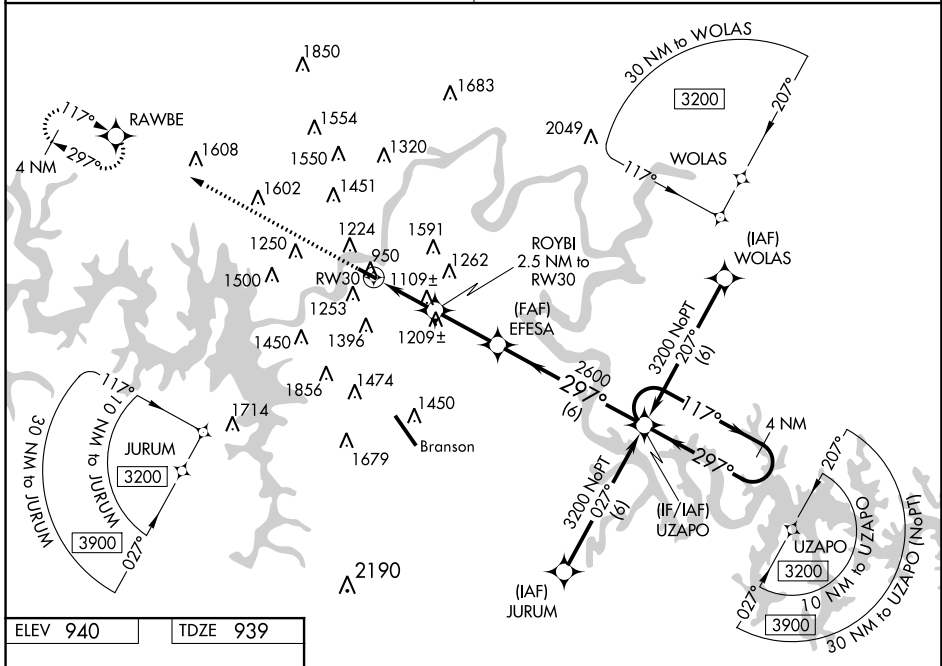
RNAV (GPS) RWY 30

M GRAHAM CLARK DOWNTOWN (PLK)

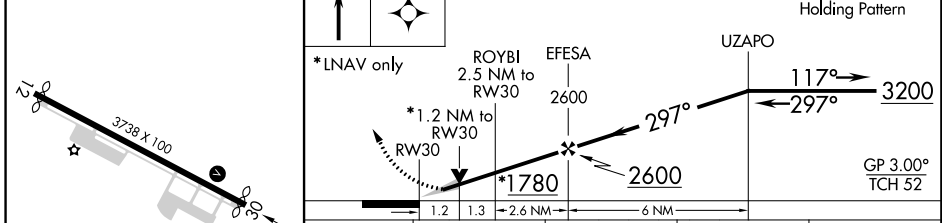
Baro-VNAV NA when using Branson altimeter setting. For uncompensated Baro-VNAV systems, LNAV/VNAV NA below -16°C (4°F) or above 54°C (130°F). DME/DME RNP-0.3 NA. VDP NA with KBBG altimeter setting. Obtain local altimeter setting on CTAF; when not received, use Branson altimeter setting and increase all DA 65 feet and all MDA 80 feet; increase LPV and LNAV/VNAV all Cats visibility 1/4 mile.

MISSED APPROACH: Climb to 3200 direct RAWBE and hold.

SPRINGFIELD APP CON 126.35	UNICOM 122.7 (CTAF)
--------------------------------------	-------------------------------



ELEV 940	TDZE 939
----------	----------



CATEGORY	A	B	C	D
LPV DA	1189-3/4	250 (300-3/4)		NA
LNAV/VNAV DA	1224-7/8	285 (300-7/8)		NA
LNAV MDA	1360-1	421 (500-1)		NA
CIRCLING	1560-1	620 (700-1)		NA

NC-3, 25 APR 2019 to 23 MAY 2019

NC-3, 25 APR 2019 to 23 MAY 2019