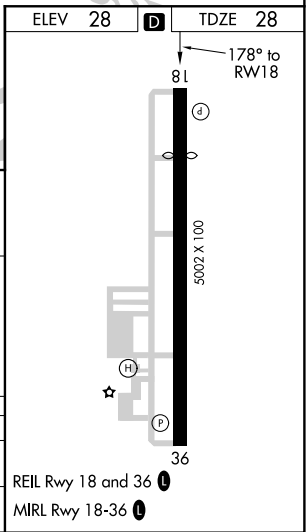
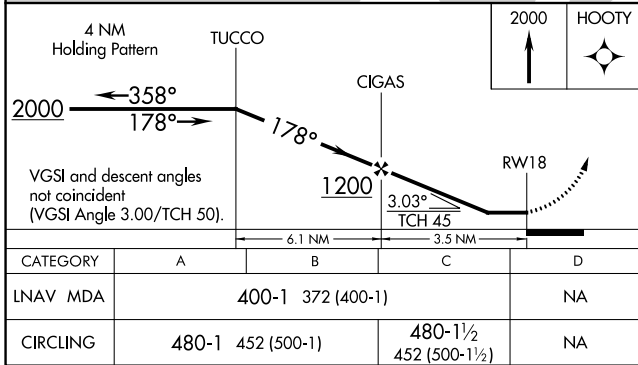
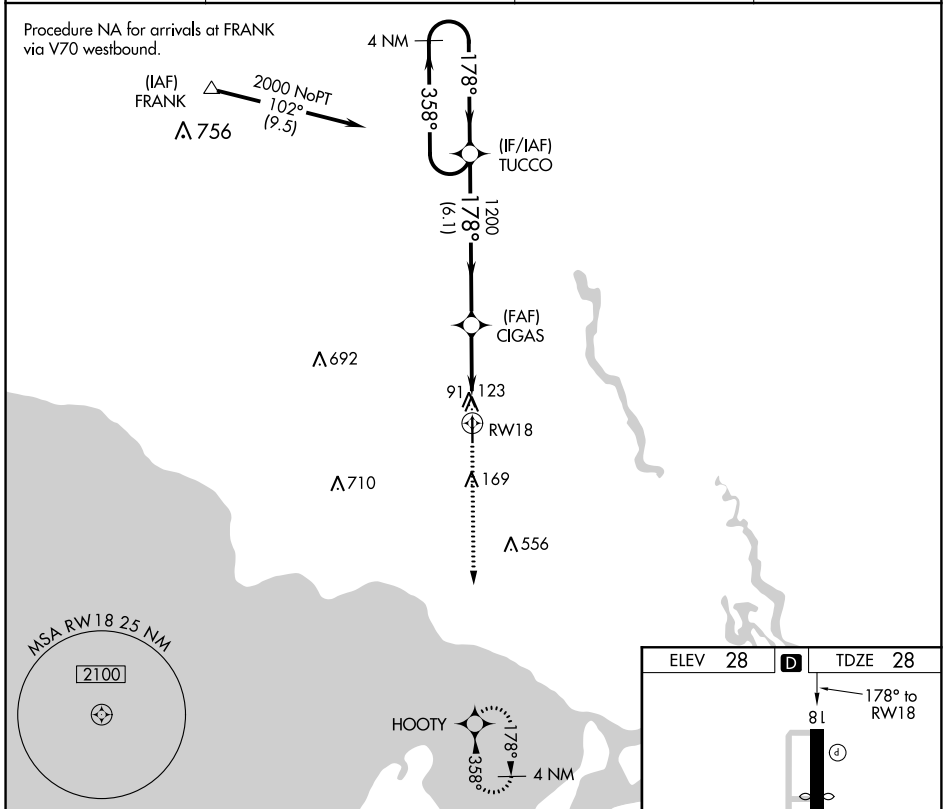


APP CRS	Rwy Idg	4058
178°	TDZE	28
	Apt Elev	28

RNAV (GPS) RWY 18

SLIDELL (ASD)

▼	DME/DME RNP-0.3 NA.	MISSED APPROACH: Climb to 2000 direct HOOTY and hold.	
▲ NA	Helicopter visibility reduction below 1 SM NA.		
ASOS	NEW ORLEANS APP CON	UNICOM	GCO
132.475	133.15 290.3	122.8 (CTAF) 0	135.075



SC-4, 25 APR 2019 to 23 MAY 2019

SC-4, 25 APR 2019 to 23 MAY 2019