

APP CRS	Rwy Ldg	5002
358°	TDZE	28
	Apt Elev	28

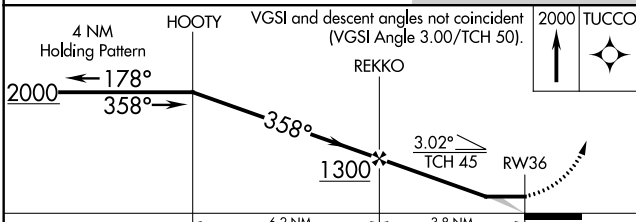
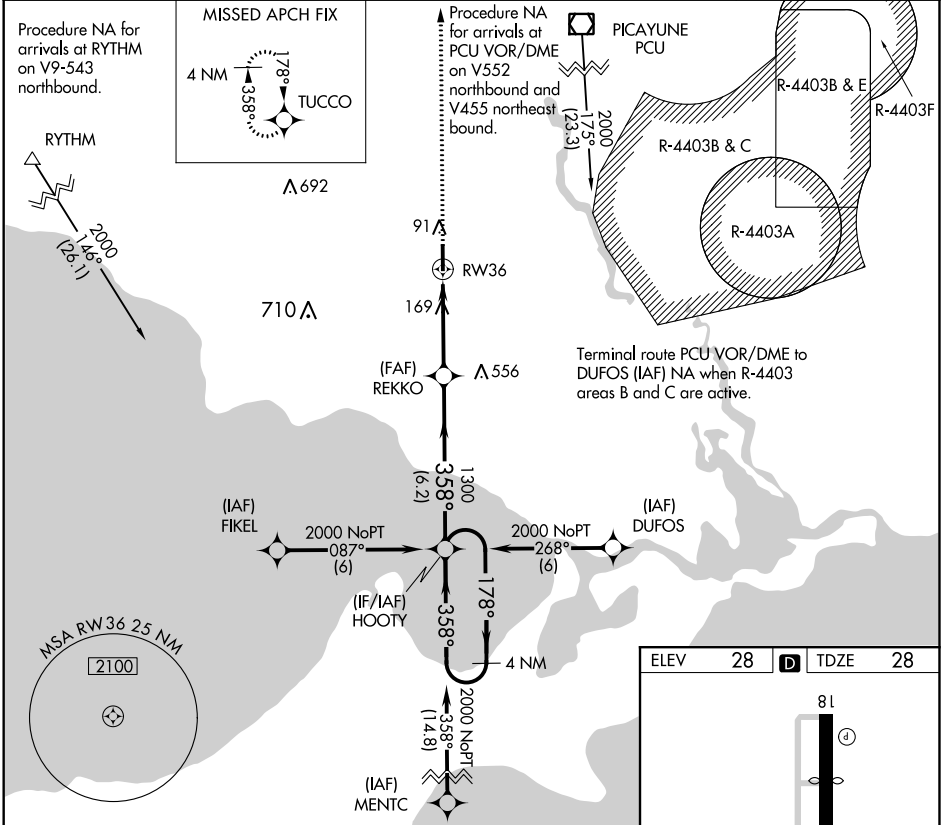
RNAV (GPS) RWY 36

SLIDELL (ASD)

NA DME/DME RNP-0.3 NA. Rwy 36 helicopter visibility reduction below 3/4 SM NA.

MISSED APPROACH: Climb to 2000 direct TUCCO and hold.

ASOS 132.475	NEW ORLEANS APP CON 133.15 290.3	UNICOM 122.8 (CTAF)	GCO 135.075
------------------------	--	-------------------------------	-----------------------



ELEV	28	TDZE	28
------	----	------	----

81

100

200

300

400

500

600

700

800

900

1000

36

MIRL Rwy 18-36

REIL Rwy 18 and 36

358° to RW36

CATEGORY	A	B	C	D
RNAV MDA	420-1 392 (400-1)			NA
CIRCLING	480-1	452 (500-1)	480-1½ 452 (500-1½)	NA

SC-4, 25 APR 2019 to 23 MAY 2019

SC-4, 25 APR 2019 to 23 MAY 2019