

| | | | |
|--|------------------------|-----------------------------|---|
| WAAS CH 99509 W27A | APP CRS 272° | Rwy Idg TDZE Apt Elev | 5000 525 530 |
|--|------------------------|-----------------------------|---|

RNAV (GPS) RWY 27

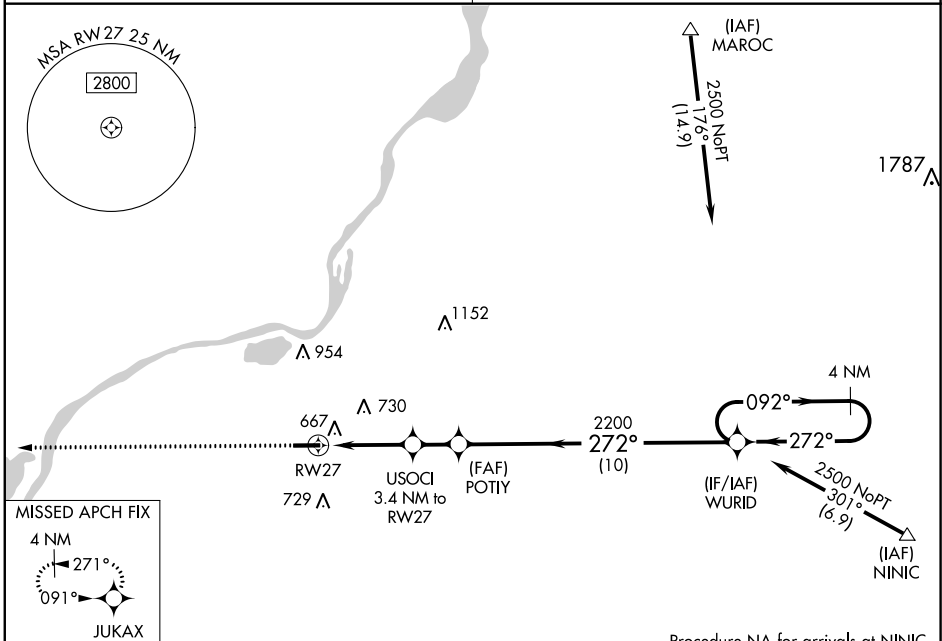
PEKIN MUNI (C15)

Baro-VNAV NA. DME/DME RNP-0.3 NA. Visibility reduction by helicopters NA.
 Use General Downing-Peoria Infil altimeter setting; when not received use Logan County altimeter setting and increase all DA 25 feet and all MDA 40 feet.

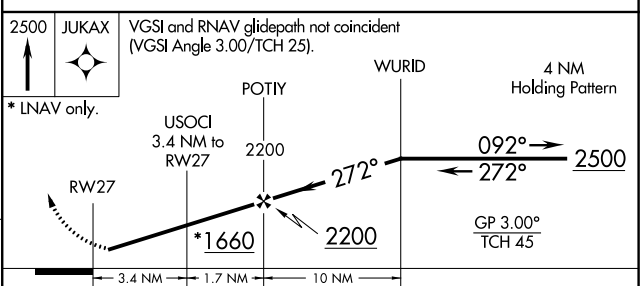
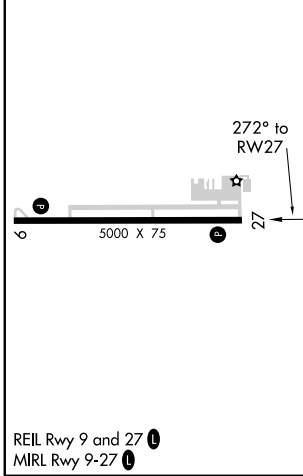
MISSED APPROACH: Climb to 2500 direct JUKAX and hold.

PEORIA APP CON **124.675 269.2**

UNICOM **122.8 (CTAF)**



| | |
|----------|----------|
| ELEV 530 | TDZE 525 |
|----------|----------|



| CATEGORY | A | B | C | D |
|--------------|----------------------|-------------|-------------------------|-------------------------|
| LPV DA | 864-1¼ 339 (400-1¼) | | | |
| LNAV/VNAV DA | 1010-1¾ 485 (500-1¾) | | | |
| LNAV MDA | 1020-1 | 495 (500-1) | 1020-1¼ 495 (500-1¼) | 1020-1½ 495 (500-1½) |
| CIRCLING | 1060-1 | 530 (600-1) | 1060-1½ 530 (600-1½) | 1080-2 550 (600-2) |

PEKIN, ILLINOIS
 REIL Rwy 9 and 27
 MIRL Rwy 9-27

EC-3: 25 APR 2019 to 23 MAY 2019

EC-3: 25 APR 2019 to 23 MAY 2019