

WAAS CH 53509 W09A	APP CRS 091°	Rwy Idg TDZE Apt Elev	5000 530 530
--	------------------------	-----------------------------	---

RNAV (GPS) RWY 9

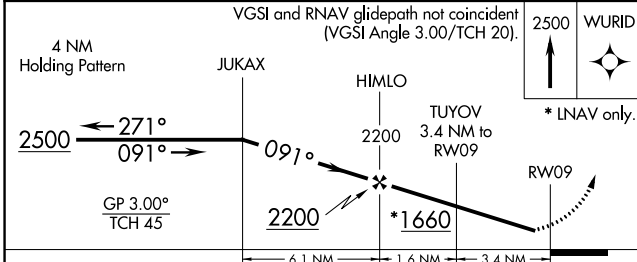
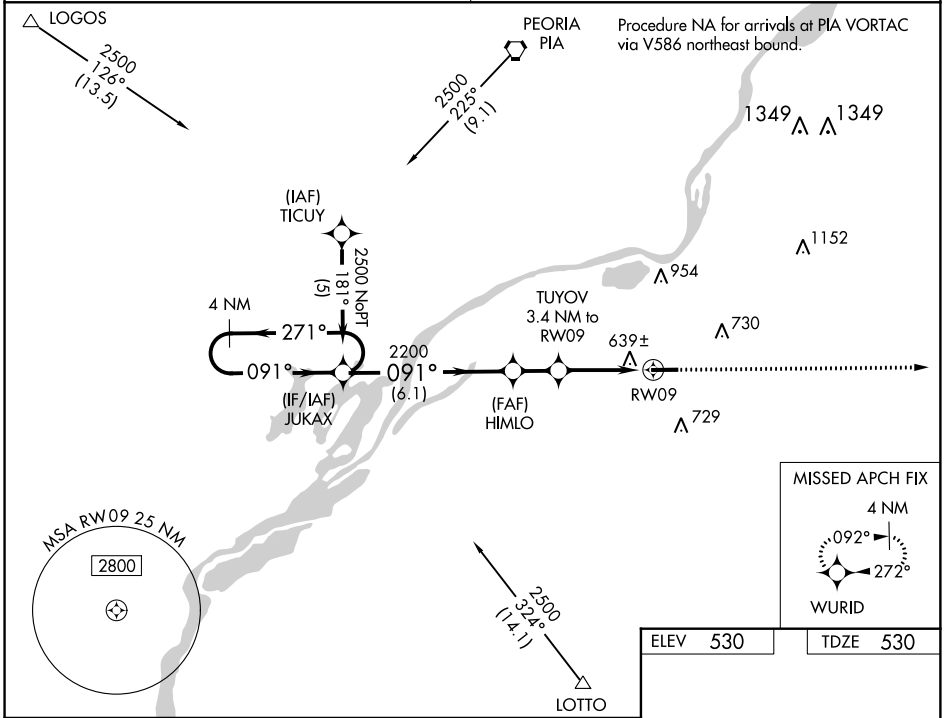
PEKIN MUNI (C15)

NA Baro-VNAV NA. DME/DME RNP-0.3 NA. Visibility reduction by helicopters NA. Use General Down-ing-Peoria Intl altimeter setting; when not received use Logan County altimeter setting and increase all DA 25 feet and all MDA 40 feet; increase LNAV/VNAV visibility ¼ mile and LNAV Cat D visibility ¼ mile.

MISSED APPROACH: Climb to 2500 direct WURID and hold.

PEORIA APP CON **124.675 269.2**

UNICOM **122.8** (CTAF) **0**



ELEV 530	TDZE 530
REIL Rwy 9 and 27 0 MIRL Rwy 9-27 0	

CATEGORY	A	B	C	D
LPV DA		862-1¼	332 (400-1¼)	
LNAV/VNAV DA		982-1½	452 (500-1½)	
LNAV MDA	940-1	410 (500-1)	940-1¼	410 (500-1¼)
CIRCLING	1060-1	530 (600-1)	1060-1½	1080-2
			530 (600-1½)	550 (600-2)

EC-3, 25 APR 2019 to 23 MAY 2019

EC-3, 25 APR 2019 to 23 MAY 2019