

WAAS CH <b>93931</b> <b>W18A</b>	APP CRS <b>179°</b>	Rwy Idg TDZE <b>682</b> Apt Elev <b>684</b>	<b>3899</b>
--	------------------------	---	-------------

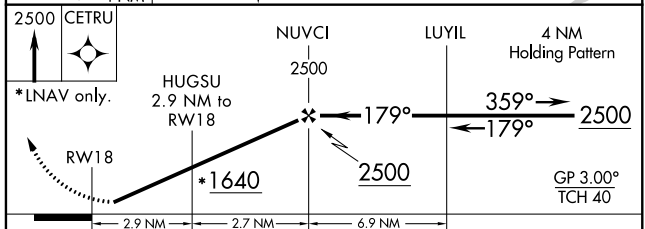
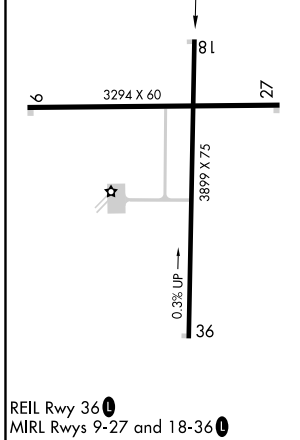
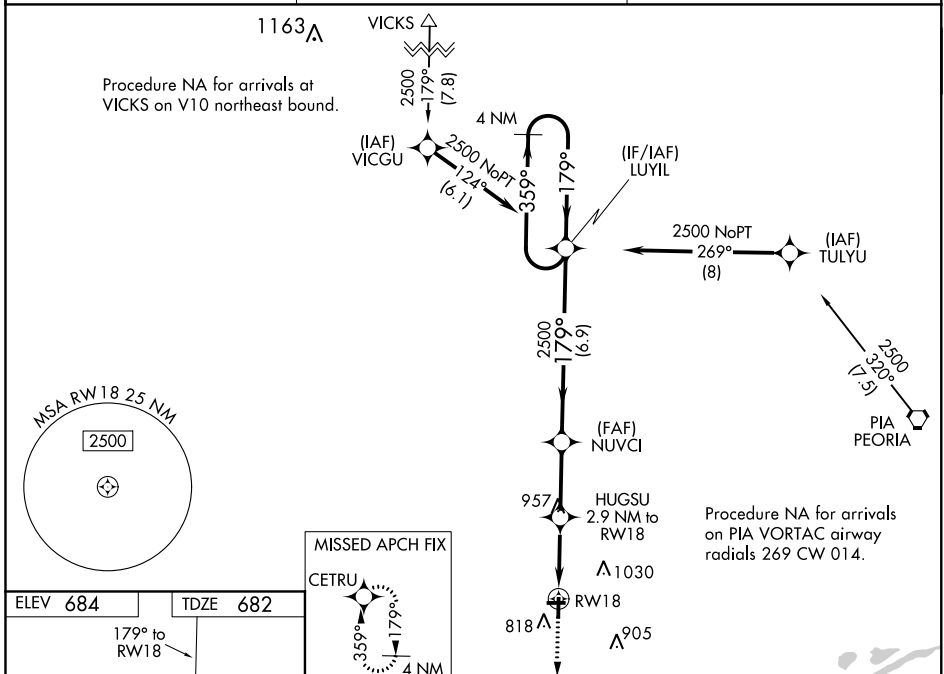
# RNAV (GPS) RWY 18

INGERSOLL (CTK)

**⚠** Baro-VNAV NA when using General Downing-Peoria Intl altimeter setting. DME/DME RNP-0.3 NA. **⚠** NA. When local altimeter not received use General Downing-Peoria Intl altimeter setting and increase all DA 46 feet and all MDA 60 feet; increase LNAV/VNAV all Cats visibility 1/8 mile and LNAV and Circling Cat C visibility 1/4 mile. Helicopter visibility reduction below 1 SM NA. Rwy 18 Straight-In and Circling and Rwy 9, 27 Circling NA at night. For uncompensated Baro-VNAV, LNAV/VNAV NA below -16°C (4°F) or above 54°C (130°F).

**MISSED APPROACH:**  
Climb to 2500 direct CETRU and hold.

AWOS-A <b>122.8</b>	PEORIA APP CON <b>124.675 269.2</b>	UNICOM <b>122.8 (CTAF) 0</b>
------------------------	--	---------------------------------



CATEGORY	A	B	C	D
LPV DA	949-1	267 (300-1)		NA
LNAV/VNAV DA	1082-1 3/8	400 (400-1 3/8)		NA
LNAV MDA	1220-1	538 (600-1)	1220-1 1/2 538 (600-1 1/2)	NA
CIRCLING	1220-1	536 (600-1)	1220-1 1/2 536 (600-1 1/2)	NA