

VORTAC LCH <b>113.4</b> Chan <b>81</b>	APP CRS <b>305°</b>	Rwy Idg TDZE Apt Elev	<b>4997</b> <b>83</b> <b>83</b>
--	------------------------	-----------------------------	---------------------------------------

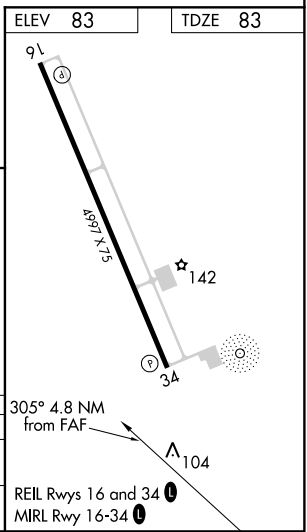
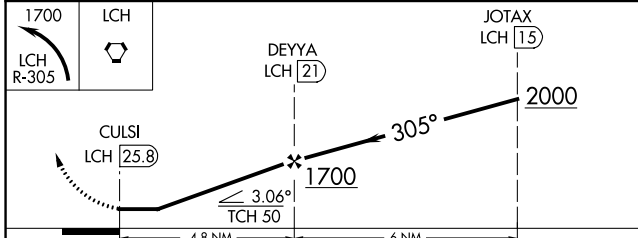
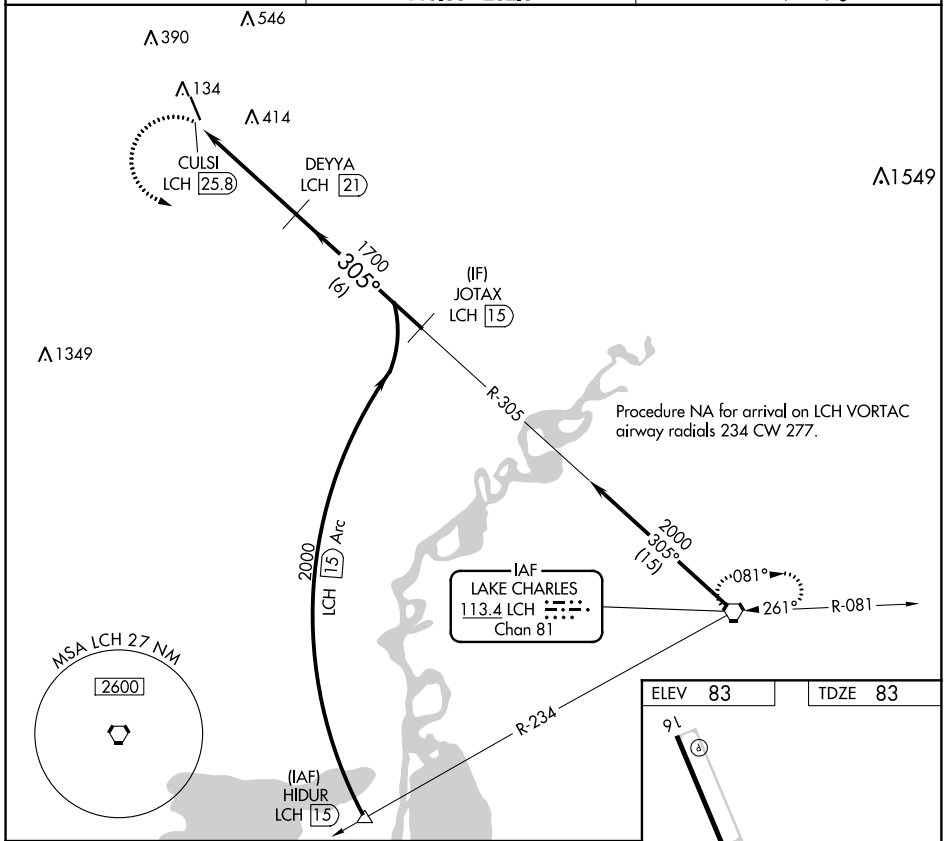
# VOR/DME RWY 34

DE QUINCY INDUSTRIAL AIRPARK (5R8)

**▼** Helicopter visibility reduction below 1 SM NA. Procedure NA at night.  
**▲ NA** When local altimeter setting not received, use Sulphur altimeter setting and increase all MDA 60 feet and S-34 Cat C visibility 1/8 mile.

**MISSED APPROACH:** Climbing left turn to 1700 on LCH VORTAC R-305 to LCH VORTAC and hold.

AWOS-3PT <b>121.2</b>	LAKE CHARLES APP CON * <b>119.35 282.3</b>	UNICOM <b>122.8</b> (CTAF) <b>0</b>
--------------------------	---	--



CATEGORY	A	B	C	D
S-34	760-1	677 (700-1)	760-1 7/8 677 (700-1 7/8)	NA
<b>C</b> CIRCLING	760-1	677 (700-1)	760-2 677 (700-2)	NA

SC-4, 25 APR 2019 to 23 MAY 2019

SC-4, 25 APR 2019 to 23 MAY 2019