


WAAS CH 45818 W18A	APP CRS 180°	Rwy Idg 5001
	TDZE 44	
	Apt Elev 47	

RNAV (GPS) RWY 18

HAMMOND NORTHSHORE RGNL (HDC)

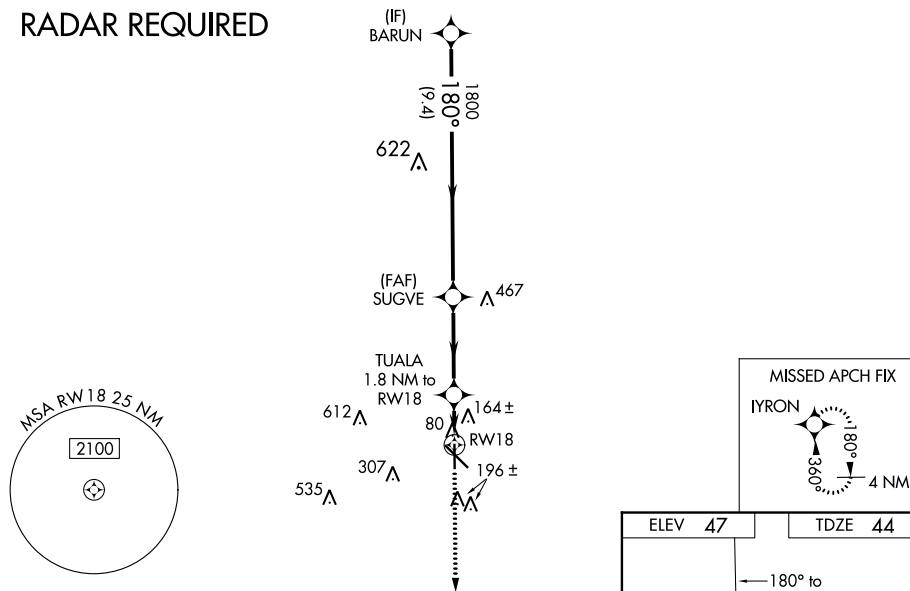
⚠ Baro-VNAV NA when using Louis Armstrong New Orleans Intl altimeter setting.
⚠ For uncompensated Baro-VNAV systems, LNAV/VNAV NA below -15°C (5°F) or above 49°C (120°F). DME/DME RNP-0.3 NA. When local altimeter setting not received, use Louis Armstrong New Orleans Intl altimeter setting and increase all DA 89 feet and all MDA 100 feet. Increase LNAV/VNAV all Cats, LNAV Cats C and D, and Circling Cat D visibility 1/4 mile. For inoperative MALSR increase LNAV Cat D visibility to 1/4 mile. For inoperative MALSR when using Louis Armstrong New Orleans Intl altimeter setting increase LPV all Cats visibility to 1 mile. VDP NA with Louis Armstrong New Orleans Intl altimeter setting.

MALSR 

MISSED APPROACH:
Climb to 2200 direct IYRON and hold.


ATIS 118.325	NEW ORLEANS APP CON 119.3 350.35	HAMMOND TOWER ★ 120.575 (CTAF) 	GND CON 119.85	NEW ORLEANS CLNC DEL 119.3 (when tower closed)
------------------------	--	--	--------------------------	---

RADAR REQUIRED



SC-4, 25 APR 2019 to 23 MAY 2019

SC-4, 25 APR 2019 to 23 MAY 2019

	BARUN		SUGVE		TUALA 1.8 NM to RW18		2200	IYRON
	1800		1800		*1.1 NM to RW18		*LNAV only	
	GP 3.00° TCH 52		*660		RW18			
	9.4 NM		3.5 NM		0.7 NM		1.1 NM	
CATEGORY	A		B		C		D	
LPV DA	244-1/2		200 (200-1/2)					
LNAV/VNAV DA	466-1		422 (500-1)					
LNAV MDA	460-1/2 416 (500-1/2)		460-3/4 416 (500-3/4)		460-1 416 (500-1)			
CIRCLING	500-1 453 (500-1)		500-1 1/2 453 (500-1 1/2)		620-2 573 (600-2)			

