

APP CRS <b>315°</b>	Rwy Idg <b>5812</b>
	TDZE <b>43</b>
	Apt Elev <b>47</b>

# RNAV (GPS) RWY 31

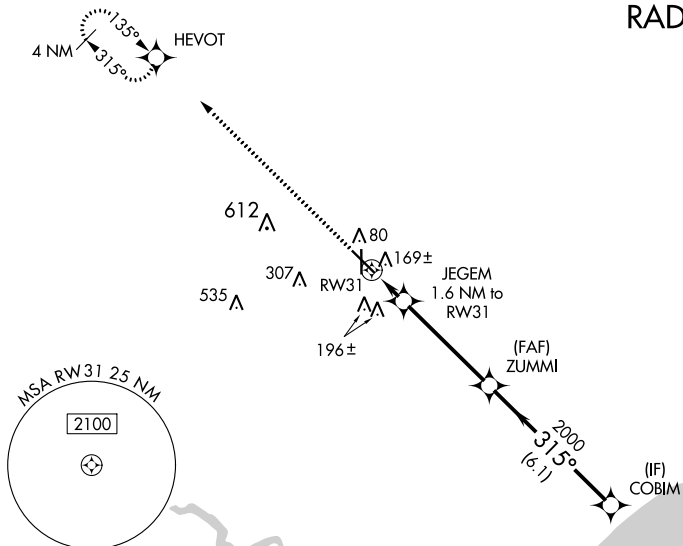
HAMMOND NORTHSORE RGNL (HDC)

**⚠** DME/DME RNP-0.3 NA. Visibility reduction by helicopters NA.  
**⚠** When local altimeter setting not received, use Louis Armstrong New Orleans Intl altimeter setting and increase all MDA 100 feet, and increase LNAV Cat C and Circling Cat D visibility ¼ mile and LNAV Cat D visibility ½ mile.  
 VDP NA with Louis Armstrong New Orleans Intl altimeter setting.

MISSED APPROACH: Climb to 2000 direct HEVOT and hold.

ATIS <b>118.325</b>	NEW ORLEANS APP CON <b>119.3 350.35</b>	<b>HAMMOND TOWER ★</b> <b>120.575</b> (CTAF) <b>0</b>	GND CON <b>119.85</b>	NEW ORLEANS CLNC DEL <b>119.3</b> (when tower closed)
------------------------	--------------------------------------------	----------------------------------------------------------	--------------------------	-------------------------------------------------------------

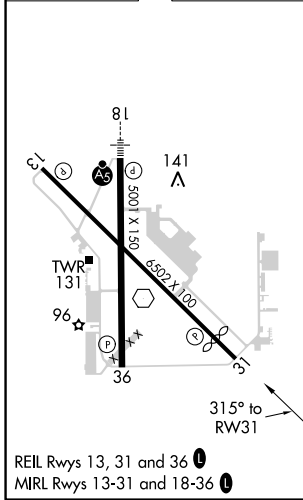
## RADAR REQUIRED



SC-4, 25 APR 2019 to 23 MAY 2019

SC-4, 25 APR 2019 to 23 MAY 2019

ELEV <b>47</b>	TDZE <b>43</b>
----------------	----------------



REIL Rws 13, 31 and 36 **0**  
 MIRL Rws 13-31 and 18-36 **0**

2000	HEVOT	ZUMMI	COBIM
	JEGEM 1.6 NM to RW31		
	1.1 NM to RW31	2000	2000
	RW31	315°	
	580	3.05°	
		TCH 50	
		VGSi and descent angles not coincident (VGSi Angle 3.30/TCH 50).	
	1.1	0.5	6.1 NM
CATEGORY	A	B	C
LNAV MDA	460-1	417 (500-1)	460-1¼ 417 (500-1¼)
CIRCLING	500-1	453 (500-1)	500-1½ 620-2 453 (500-1½) 573 (600-2)